



Title Plan - LT 583917

Survey Number LT 583917
Surveyor Reference 21-30378-18 - GHP - Area LUK - Stage 18
Surveyor Scott Rodney Carley
Survey Firm Shrimpton and Lipinski Limited Partnership
Surveyor Declaration

Survey Details

Dataset Description Lots 19, 103, 160, 304, 306-309 & 536-580 Being a Subdivision of Lot 2 DP 570352
Status Initiated
Land District South Auckland
Submitted Date
Survey Class Class A
Survey Approval Date
Deposit Date

Territorial Authorities

Hamilton City

Comprised In

RT 1030271

Created Parcels

Parcels	Parcel Intent	Area	RT Reference
Lot 19 Deposited Plan 583917	Fee Simple Title	22.9000 Ha	1098491
Lot 103 Deposited Plan 583917	Vesting on Deposit for Road	0.9898 Ha	
Lot 160 Deposited Plan 583917	Vesting on Deposit for Local Purpose Reserve	0.0208 Ha	1098492
Lot 304 Deposited Plan 583917	Vesting on Deposit for Local Purpose Reserve	0.6508 Ha	1098493
Lot 306 Deposited Plan 583917	Vesting on Deposit for Local Purpose Reserve	0.1306 Ha	1098494
Lot 307 Deposited Plan 583917	Vesting on Deposit for Local Purpose Reserve	0.0100 Ha	1098495
Lot 308 Deposited Plan 583917	Vesting on Deposit for Recreation Reserve (Territorial Authority)	0.3613 Ha	1098496
Lot 309 Deposited Plan 583917	Vesting on Deposit for Recreation Reserve (Territorial Authority)	0.0567 Ha	1098497
Lot 536 Deposited Plan 583917	Fee Simple Title	0.0393 Ha	1098498
Lot 537 Deposited Plan 583917	Fee Simple Title	0.0375 Ha	1098499
Lot 538 Deposited Plan 583917	Fee Simple Title	0.0375 Ha	1098500
Lot 539 Deposited Plan 583917	Fee Simple Title	0.0300 Ha	1098501
Lot 540 Deposited Plan 583917	Fee Simple Title	0.0306 Ha	1098502
Lot 541 Deposited Plan 583917	Fee Simple Title	0.0308 Ha	1098503
Lot 542 Deposited Plan 583917	Fee Simple Title	0.0367 Ha	1098504
Lot 543 Deposited Plan 583917	Fee Simple Title	0.0367 Ha	1098505

Title Plan - LT 583917

Created Parcels

Parcels	Parcel Intent	Area	RT Reference
Lot 544 Deposited Plan 583917	Fee Simple Title	0.0294 Ha	1098506
Lot 545 Deposited Plan 583917	Fee Simple Title	0.0294 Ha	1098507
Lot 546 Deposited Plan 583917	Fee Simple Title	0.0405 Ha	1098508
Lot 547 Deposited Plan 583917	Fee Simple Title	0.0270 Ha	1098509
Lot 548 Deposited Plan 583917	Fee Simple Title	0.0210 Ha	1098510
Lot 549 Deposited Plan 583917	Fee Simple Title	0.0210 Ha	1098511
Lot 550 Deposited Plan 583917	Fee Simple Title	0.0300 Ha	1098512
Lot 551 Deposited Plan 583917	Fee Simple Title	0.0227 Ha	1098513
Lot 552 Deposited Plan 583917	Fee Simple Title	0.0210 Ha	1098514
Lot 553 Deposited Plan 583917	Fee Simple Title	0.0210 Ha	1098515
Lot 554 Deposited Plan 583917	Fee Simple Title	0.0210 Ha	1098516
Lot 555 Deposited Plan 583917	Fee Simple Title	0.0210 Ha	1098517
Lot 556 Deposited Plan 583917	Fee Simple Title	0.0210 Ha	1098518
Lot 557 Deposited Plan 583917	Fee Simple Title	0.0230 Ha	1098519
Lot 558 Deposited Plan 583917	Fee Simple Title	0.0210 Ha	1098520
Lot 559 Deposited Plan 583917	Fee Simple Title	0.0210 Ha	1098521
Lot 560 Deposited Plan 583917	Fee Simple Title	0.0300 Ha	1098522
Lot 561 Deposited Plan 583917	Fee Simple Title	0.0210 Ha	1098523
Lot 562 Deposited Plan 583917	Fee Simple Title	0.0210 Ha	1098524
Lot 563 Deposited Plan 583917	Fee Simple Title	0.0210 Ha	1098525
Lot 564 Deposited Plan 583917	Fee Simple Title	0.0210 Ha	1098526
Lot 565 Deposited Plan 583917	Fee Simple Title	0.0255 Ha	1098527
Lot 566 Deposited Plan 583917	Fee Simple Title	0.0368 Ha	1098528
Lot 567 Deposited Plan 583917	Fee Simple Title	0.0368 Ha	1098529
Lot 568 Deposited Plan 583917	Fee Simple Title	0.0368 Ha	1098530
Lot 569 Deposited Plan 583917	Fee Simple Title	0.0300 Ha	1098531
Lot 570 Deposited Plan 583917	Fee Simple Title	0.0300 Ha	1098532
Lot 571 Deposited Plan 583917	Fee Simple Title	0.0300 Ha	1098533
Lot 572 Deposited Plan 583917	Fee Simple Title	0.0300 Ha	1098534
Lot 573 Deposited Plan 583917	Fee Simple Title	0.0368 Ha	1098535
Lot 574 Deposited Plan 583917	Fee Simple Title	0.0437 Ha	1098536
Lot 575 Deposited Plan 583917	Fee Simple Title	0.0384 Ha	1098537
Lot 576 Deposited Plan 583917	Fee Simple Title	0.0395 Ha	1098538
Lot 577 Deposited Plan 583917	Fee Simple Title	0.0283 Ha	1098539
Lot 578 Deposited Plan 583917	Fee Simple Title	0.0220 Ha	1098540
Lot 579 Deposited Plan 583917	Fee Simple Title	0.0220 Ha	1098541
Lot 580 Deposited Plan 583917	Fee Simple Title	0.0283 Ha	1098542
Area A Deposited Plan 583917	Easement		
Area AC Deposited Plan 583917	Easement		
Area BA Deposited Plan 583917	Easement		
Area BB Deposited Plan 583917	Easement		
Area C Deposited Plan 583917	Easement		
Area F Deposited Plan 583917	Easement		
Area M Deposited Plan 583917	Easement		



Title Plan - LT 583917

Created Parcels

Parcels	Parcel Intent	Area	RT Reference
Area U Deposited Plan 583917	Easement		
Total Area		<hr/> 26.4190 Ha	



Land Specialists
Your Property, Our Environment

S&L Project Reference: 30378-18 – Area LUK – Stage 18

Land Registration District

South Auckland

Plan Number

DP 583917

Territorial Authority (the Council)

Hamilton City Council

Schedule of Existing Easements			
Purpose	Shown	Burdened Land	Document Number
Right of way	BA	Lot 308 hereon	EI 11070524.17
	BB	Lot 309 hereon	



S&L Project Reference: 30378-18 – Area LUK – Stage 18

Land Registration District

South Auckland

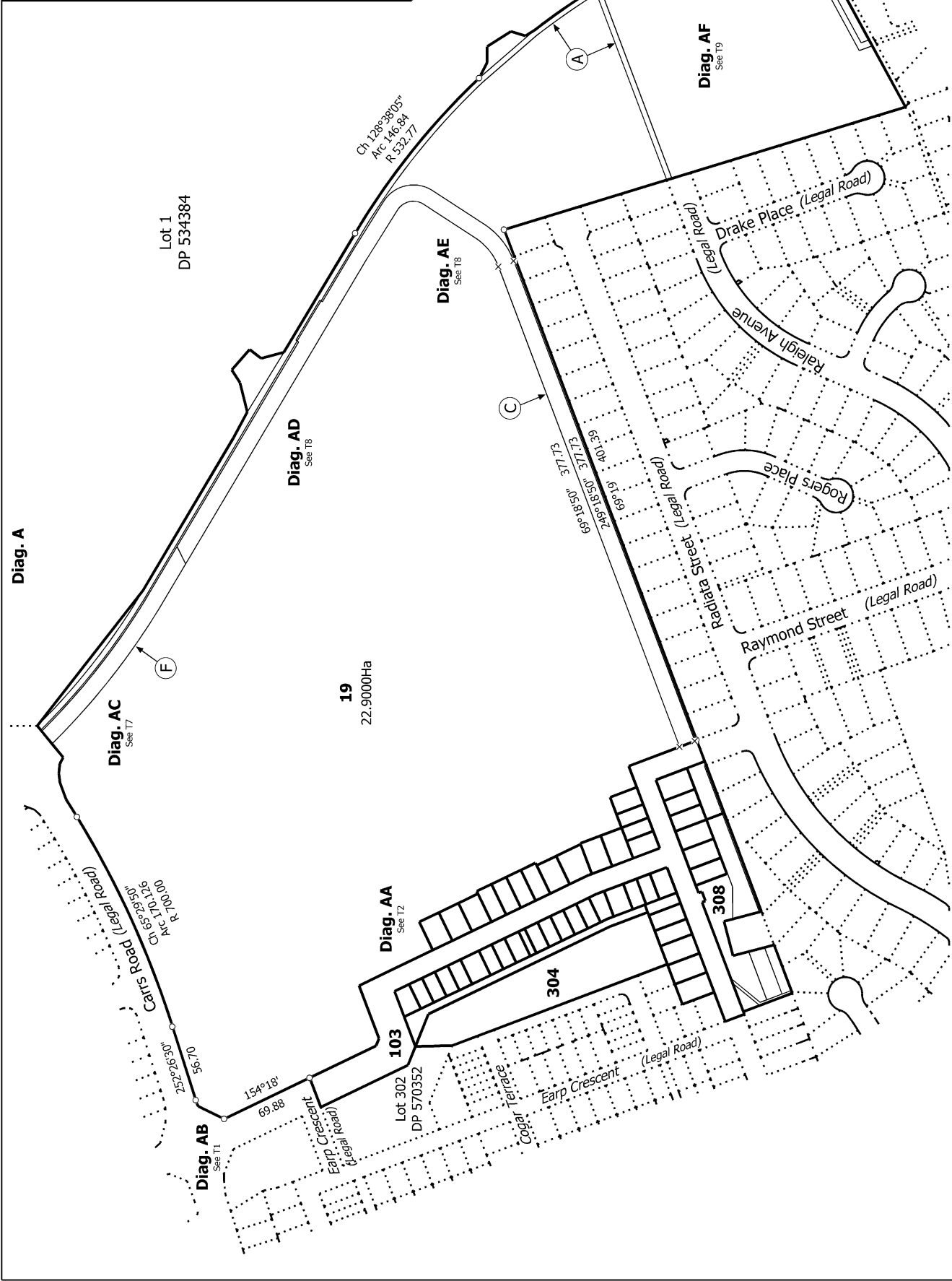
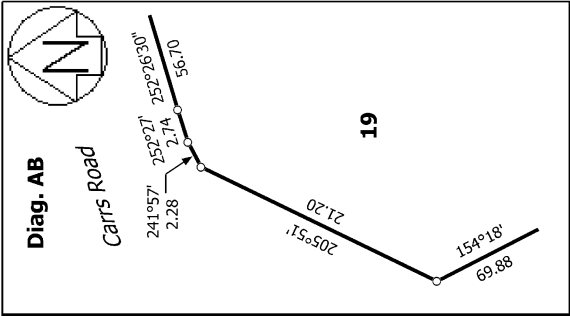
Plan Number

DP 583917

Territorial Authority (the Council)

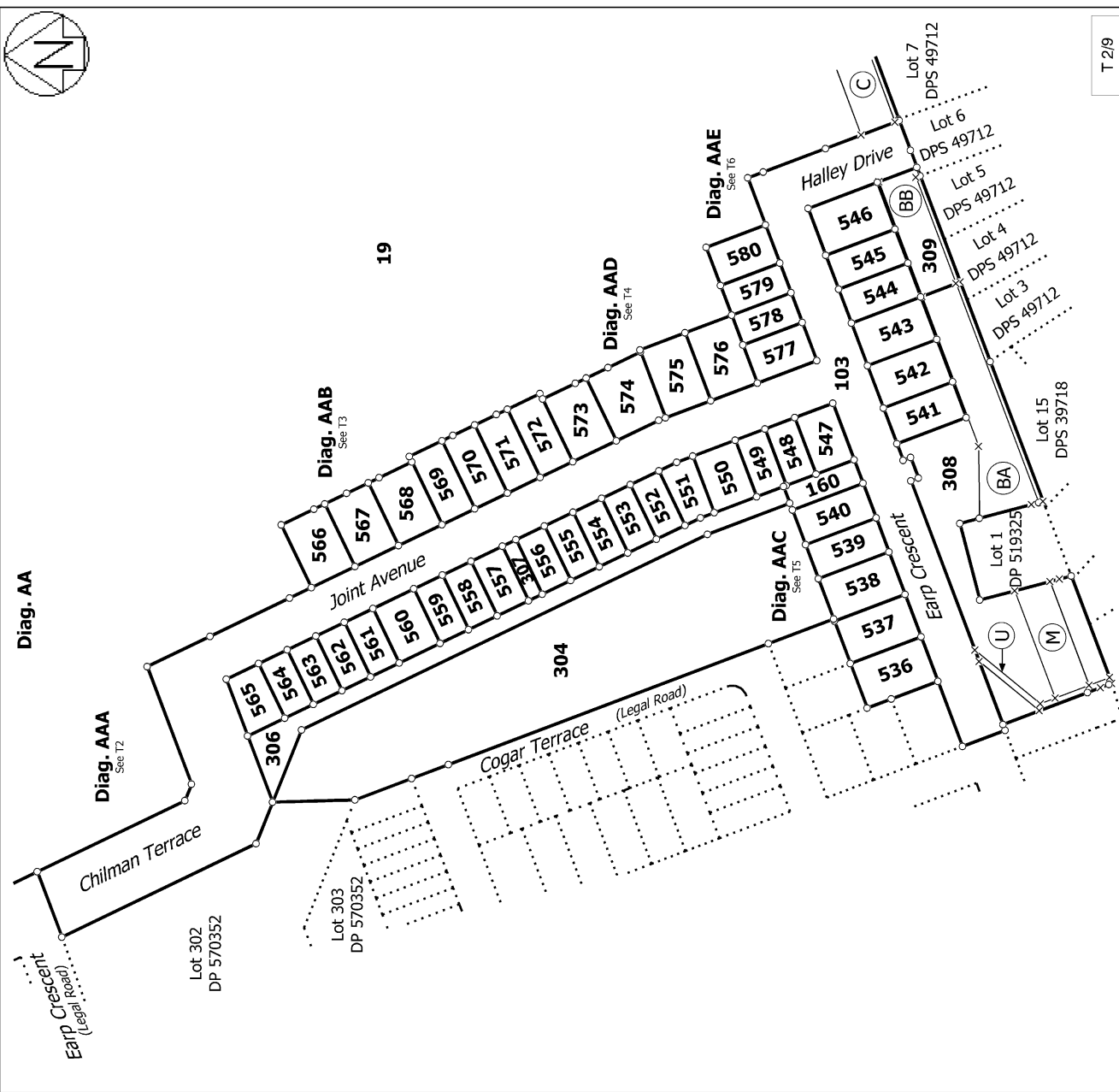
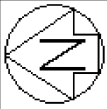
Hamilton City Council

Schedule of Existing Easements in Gross				
Purpose	Shown	Burdened Land	Grantee	Document Number
Right to convey electricity and telecommunications	F	Lot 19 hereon	Transpower New Zealand Limited	EI 10700635.1
Right of way	BA	Lot 308 hereon	Transpower New Zealand Limited	EI 11070524.16
	BB	Lot 309 hereon		
Right to convey electricity and telecommunications	BA	Lot 308 hereon	Transpower New Zealand Limited	EI 11070524.14
	BB	Lot 309 hereon		
	AC	Lot 19 hereon		
	C	Lot 19 hereon		
Right to convey electricity for earthing purposes	BA	Lot 308 hereon	Transpower New Zealand Limited	EI 11070524.15
	BB	Lot 309 hereon		
Right to convey telecommunications and computer media	BA	Lot 308 hereon	Transpower New Zealand Limited	EI 11070524.10
	BB	Lot 309 hereon		
Right to convey, discharge and earth electricity	M	Lot 308 hereon	Transpower New Zealand Limited	EI 11070524.13
Right to convey electricity, telecommunications	A	Lot 19 hereon	WEL Networks Limited	EI 12582161.2
	AC	Lot 19 hereon		
Right to drain water	U	Lot 308 hereon	Hamilton City Council	EI 12423230.4



T 1/9

<p>Land District: South Auckland</p> <p>Digitally Generated Plan</p> <p>Generated on: 17/01/2023 12:39pm Page 6 of 14</p>	<p>Lots 19, 103, 160, 304, 306-309 & 536-580 Being a Subdivision of Lot 2 DP 570352</p> <p>Surveyor: Scott Rodney Carley Firm: Shrimpton and Lipinski Limited Partrn</p>	<p>Title Plan LT 583917 DRAFT</p>
--	---	--

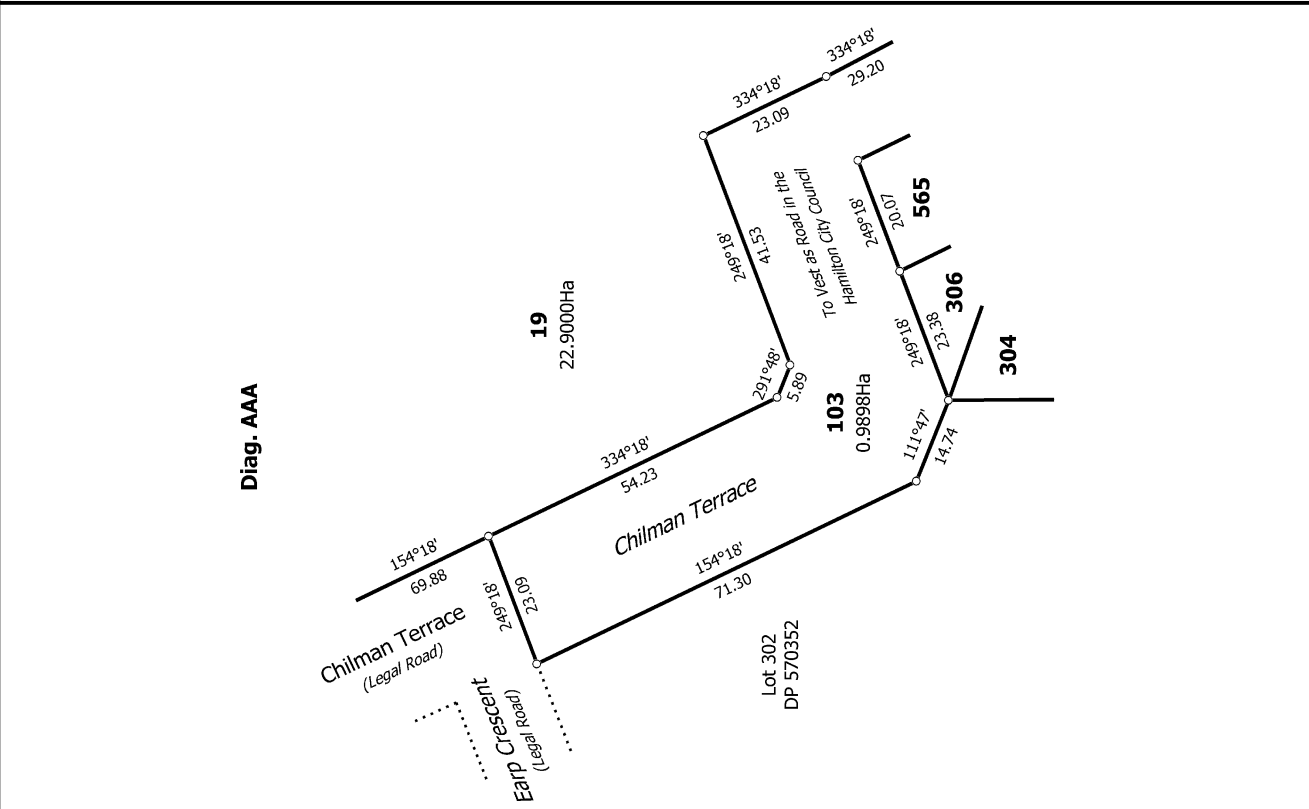


T 2/9

Title Plan
 LT 583917
 DRAFT

Surveyor: Scott Rodney Carley
 Firm: Shrimpton and Lipinski Limited Partrn

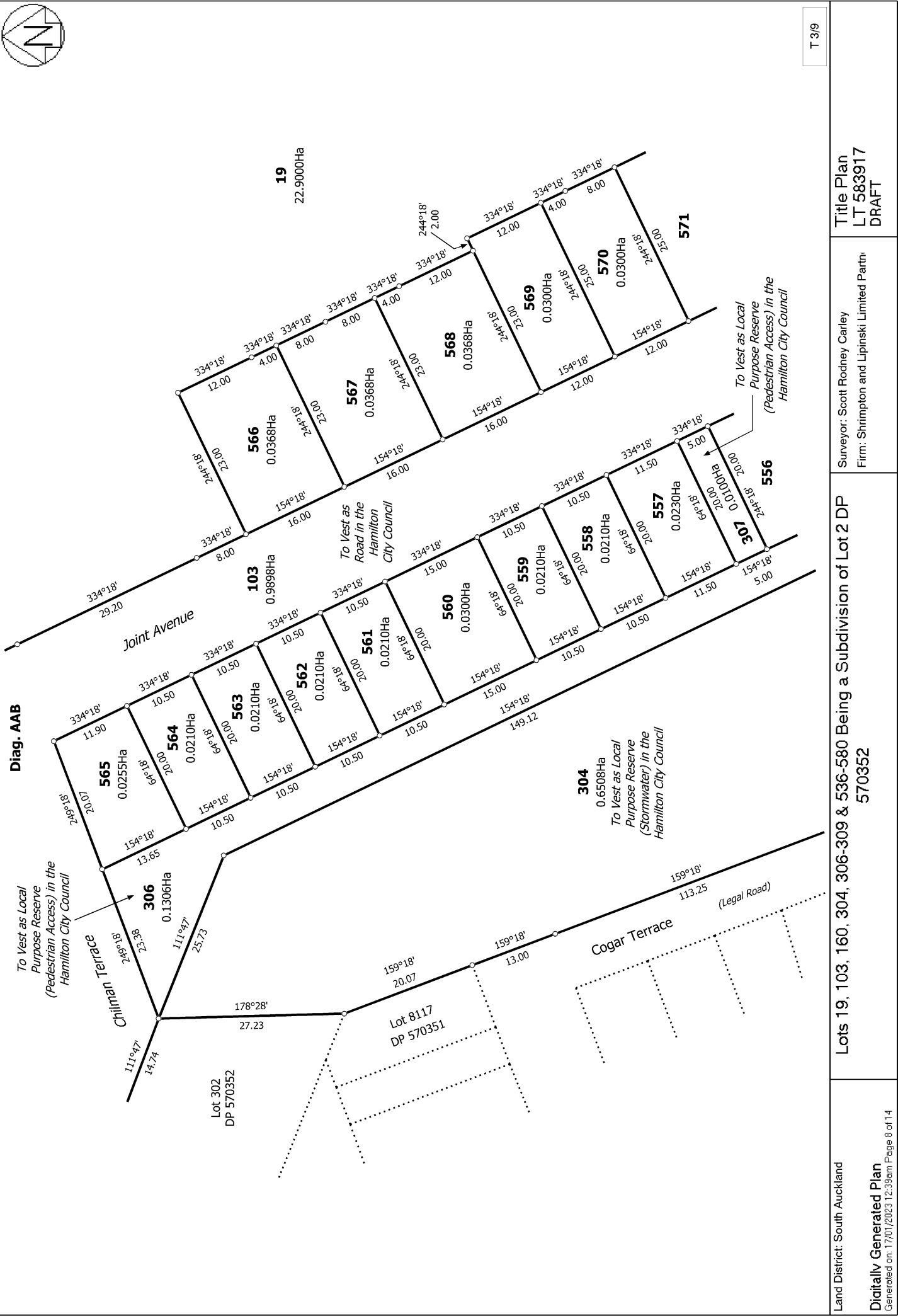
Lots 19, 103, 160, 304, 306-309 & 536-580 Being a Subdivision of Lot 2 DP 570352

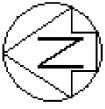


Land District: South Auckland

Digitally Generated Plan

Generated on: 17/01/2023 12:33pm Page 7 of 14





Diag. AAD



307
0.0100Ha
To Vest as Local Purpose Reserve (Pedestrian Access) in the Hamilton City Council

306
0.1306Ha
To Vest as Local Purpose Reserve (Pedestrian Access) in the Hamilton City Council

304
0.6508Ha
To Vest as Local Purpose Reserve (Stormwater) in the Hamilton City Council

Lot 519
DP 570352

Cogar Terrace
113.25
(Legal Road)

Joint Avenue

To Vest as Road in the Hamilton City Council

T 4/9

Land District: South Auckland

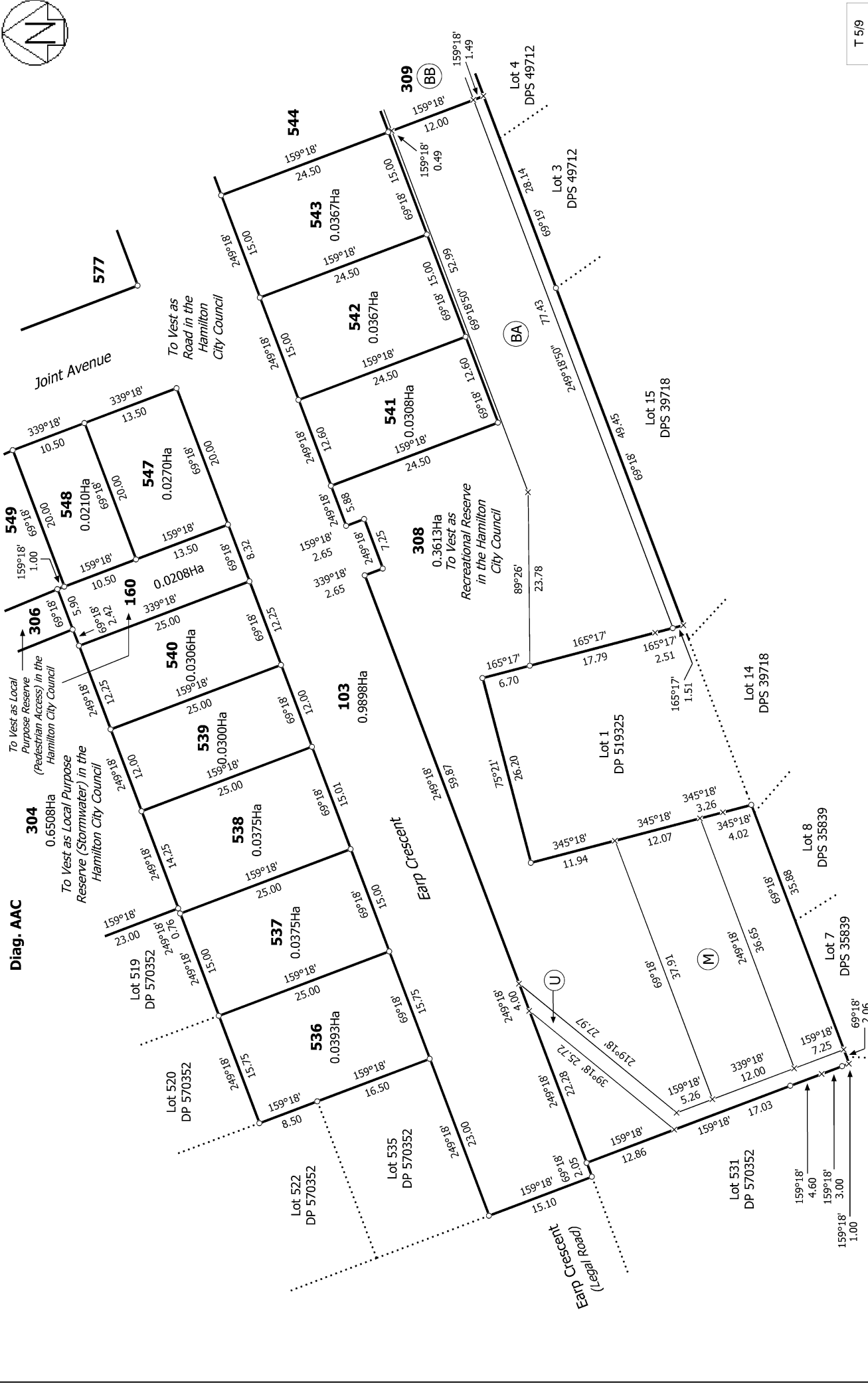
Digitally Generated Plan

Generated on: 17/01/2023 12:39pm | Page 9 of 14

Lots 19, 103, 160, 304, 306-309 & 536-580 Being a Subdivision of Lot 2 DP 570352

Surveyor: Scott Rodney Carley
Firm: Shrimpton and Lipinski Limited Partnr

Title Plan
LT 583917
DRAFT



T 5/9

Land District: South Auckland	Surveyor: Scott Rodney Carley Firm: Shrimpton and Lipinski Limited Partrn	Title Plan LT 583917 DRAFT
Lots 19, 103, 160, 304, 306-309 & 536-580 Being a Subdivision of Lot 2 DP 570352		
Digitally Generated Plan Generated on: 17/01/2023 12:39pm Page 10 of 14		



Diag. AAE



T 6/9

Land District: South Auckland

Digitally Generated Plan

Generated on: 17/01/2023 12:39pm Page 11 of 14

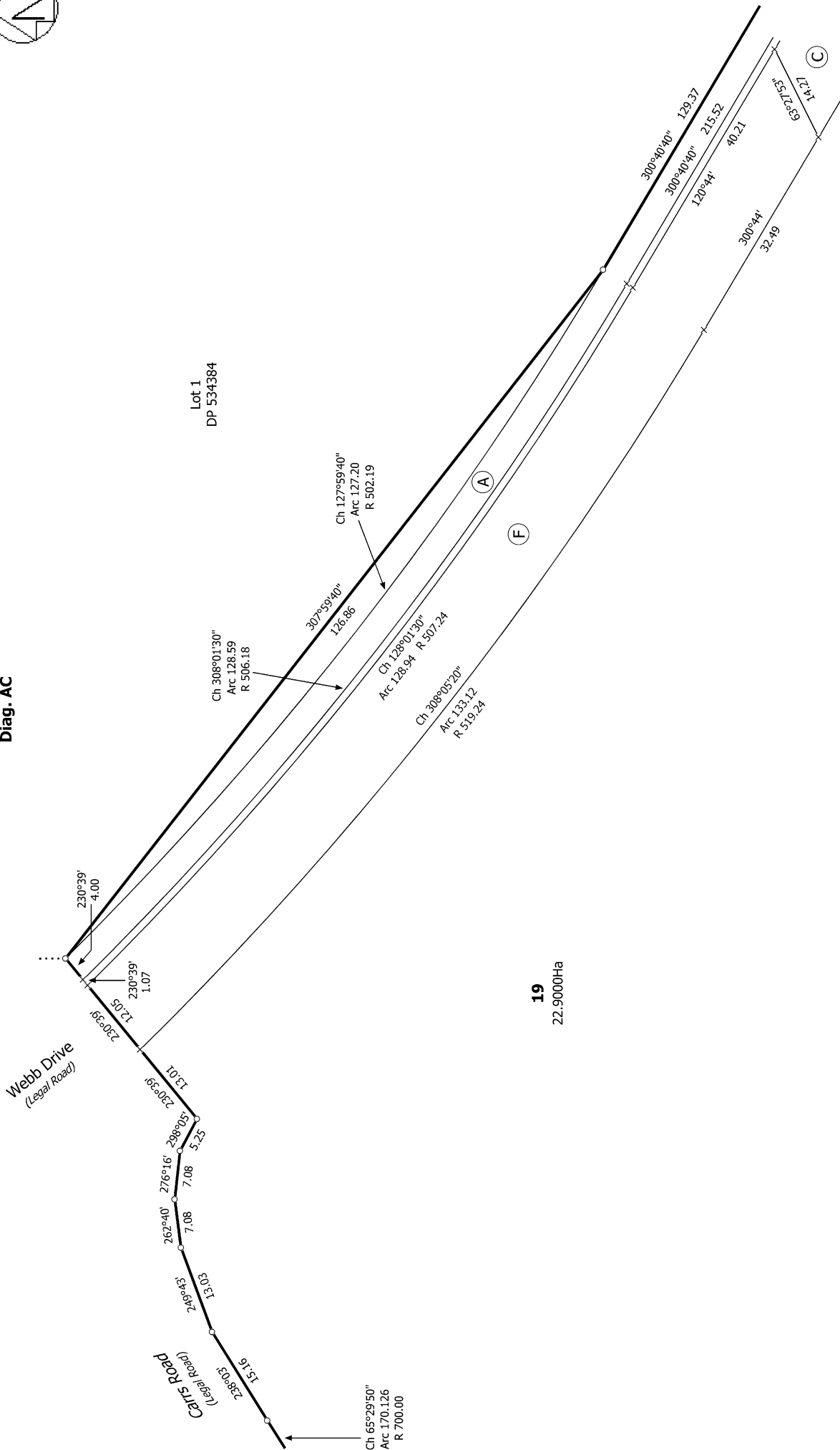
Lots 19, 103, 160, 304, 306-309 & 536-580 Being a Subdivision of Lot 2 DP 570352

Surveyor: Scott Rodney Carley
Firm: Shrimpton and Lipinski Limited Partnr

Title Plan
LT 583917
DRAFT

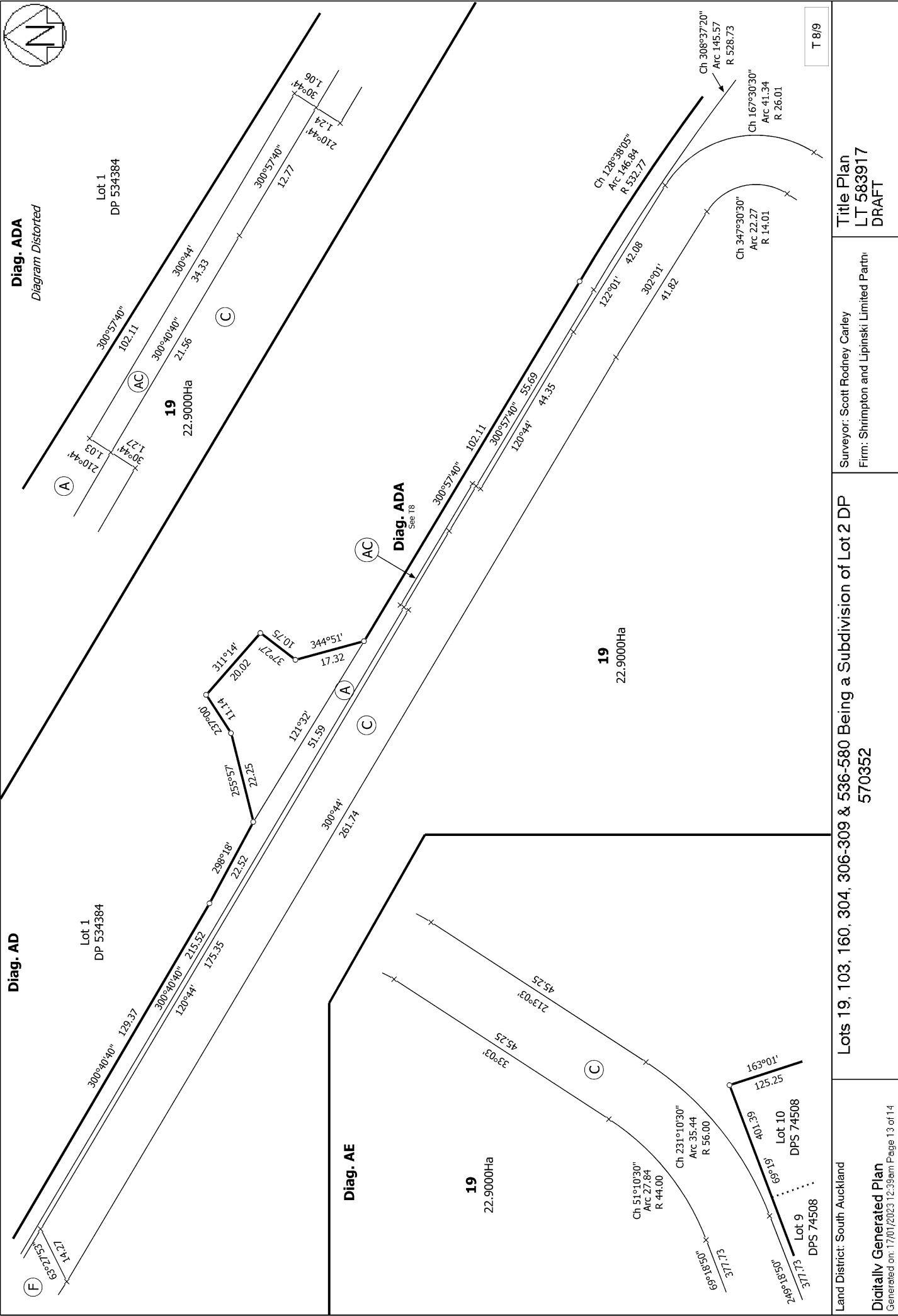


Diag. AC



T 7/9

Land District: South Auckland	Surveyor: Scott Rodney Carley Firm: Shrimpton and Lipinski Limited Partrn	Title Plan LT 583917 DRAFT
Lots 19, 103, 160, 304, 306-309 & 536-580 Being a Subdivision of Lot 2 DP 570352		Digitally Generated Plan Generated on: 17/01/2023 12:39pm Page 12 of 14



T 8/9

Diag. ADA
Diagram Distorted

Diag. AD

Diag. AE

Lot 1
DP 534384

Lot 1
DP 534384

19
22.9000Ha

19
22.9000Ha

19
22.9000Ha

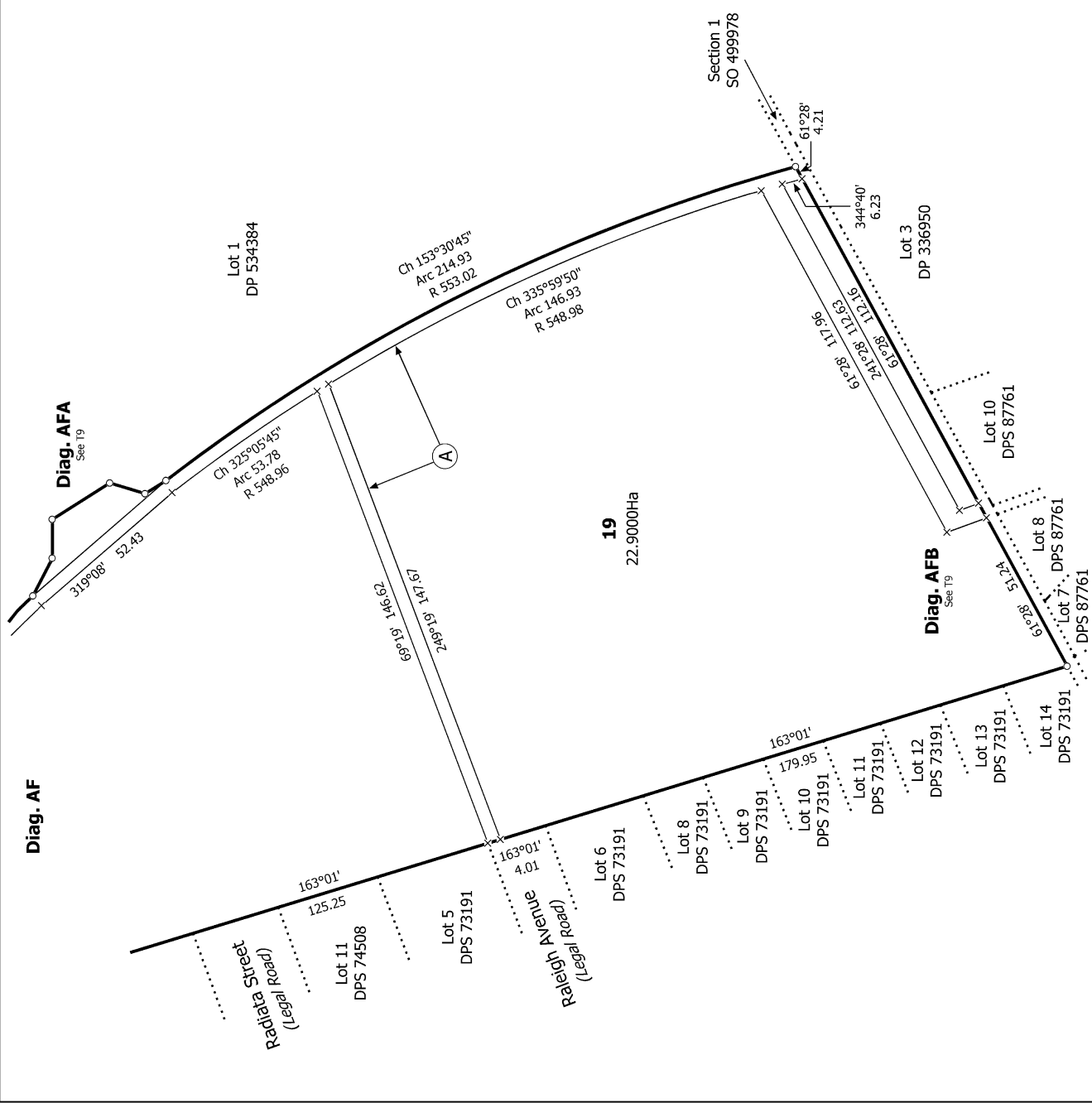
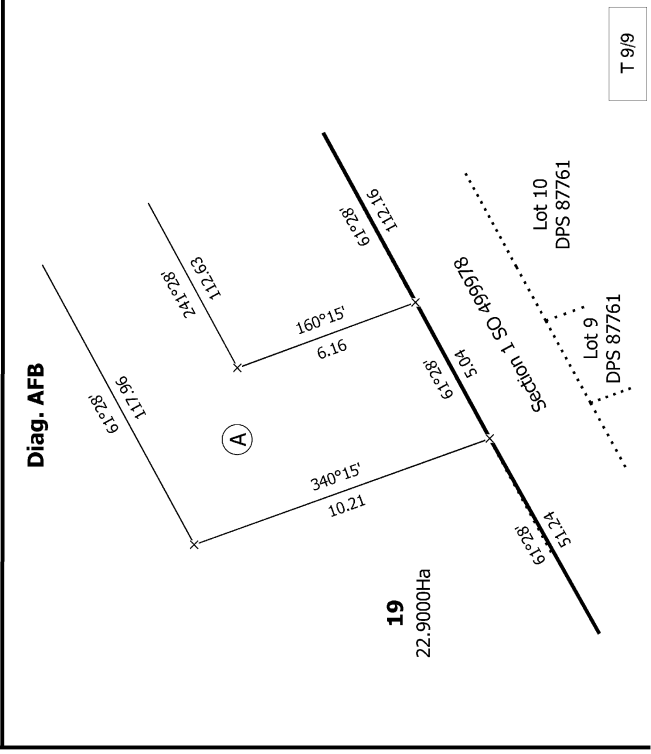
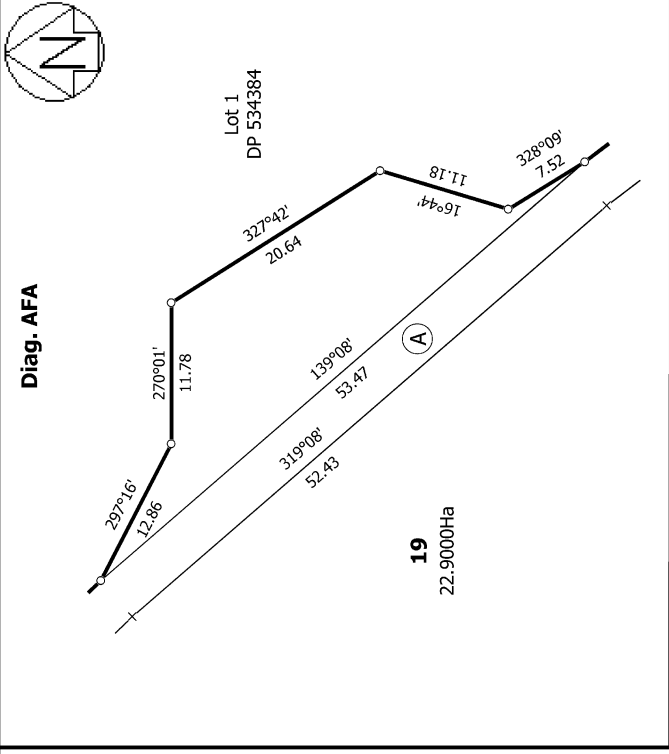
Land District: South Auckland

Lots 19, 103, 160, 304, 306-309 & 536-580 Being a Subdivision of Lot 2 DP
570352

Surveyor: Scott Rodney Carley
Firm: Shrimpton and Lipinski Limited Partn

Title Plan
LT 583917
DRAFT

Digitally Generated Plan
Generated on: 17/01/2023 12:39pm | Page 13 of 14



Surveyor: Scott Rodney Carley
 Firm: Shrimpton and Lipinski Limited Partnr

Title Plan
 LT 583917
 DRAFT

Land District: South Auckland
Digitally Generated Plan
 Generated on: 17/01/2023 12:39pm | Page 14 of 14

Lots 19, 103, 160, 304, 306-309 & 536-580 Being a Subdivision of Lot 2 DP 570352