



Title Plan - LT 587367

Survey Number LT 587367
Surveyor Reference 30378-19 - Area LUK - Stage 19 - LT 587367
Surveyor Scott Rodney Carley
Survey Firm Shrimpton and Lipinski Limited Partnership
Surveyor Declaration

Survey Details

Dataset Description Lots 20, 104, 257, 310, 581-609 & 8031-8037 Being a Subdivision of Lot 19 DP 583917
Status Initiated
Land District South Auckland
Submitted Date
Survey Class Class A
Survey Approval Date
Deposit Date

Territorial Authorities

Hamilton City

Comprised In

RT 1098491

Created Parcels

Parcels	Parcel Intent	Area	RT Reference
Lot 20 Deposited Plan 587367	Fee Simple Title	21.1300 Ha	1114471
Lot 104 Deposited Plan 587367	Vesting on Deposit for Road	0.5155 Ha	
Lot 257 Deposited Plan 587367	Vesting on Deposit for Road	0.0605 Ha	
Lot 310 Deposited Plan 587367	Vesting on Deposit for Recreation Reserve (Territorial Authority)	0.0647 Ha	1114073
Lot 581 Deposited Plan 587367	Fee Simple Title	0.0395 Ha	1114074
Lot 582 Deposited Plan 587367	Fee Simple Title	0.0384 Ha	1114075
Lot 583 Deposited Plan 587367	Fee Simple Title	0.0326 Ha	1114076
Lot 584 Deposited Plan 587367	Fee Simple Title	0.0300 Ha	1114077
Lot 585 Deposited Plan 587367	Fee Simple Title	0.0300 Ha	1114078
Lot 586 Deposited Plan 587367	Fee Simple Title	0.0368 Ha	1114079
Lot 587 Deposited Plan 587367	Fee Simple Title	0.0368 Ha	1114080
Lot 588 Deposited Plan 587367	Fee Simple Title	0.0368 Ha	1114081
Lot 589 Deposited Plan 587367	Fee Simple Title	0.0300 Ha	1114082
Lot 590 Deposited Plan 587367	Fee Simple Title	0.0300 Ha	1114083
Lot 591 Deposited Plan 587367	Fee Simple Title	0.0300 Ha	1114084
Lot 592 Deposited Plan 587367	Fee Simple Title	0.0300 Ha	1114085
Lot 593 Deposited Plan 587367	Fee Simple Title	0.0368 Ha	1114086
Lot 594 Deposited Plan 587367	Fee Simple Title	0.0368 Ha	1114087
Lot 595 Deposited Plan 587367	Fee Simple Title	0.0368 Ha	1114088
Lot 596 Deposited Plan 587367	Fee Simple Title	0.0300 Ha	1114089

Title Plan - LT 587367

Created Parcels

Parcels	Parcel Intent	Area	RT Reference
Lot 597 Deposited Plan 587367	Fee Simple Title	0.0300 Ha	1114090
Lot 598 Deposited Plan 587367	Fee Simple Title	0.0300 Ha	1114091
Lot 599 Deposited Plan 587367	Fee Simple Title	0.0300 Ha	1114092
Lot 600 Deposited Plan 587367	Fee Simple Title	0.0368 Ha	1114093
Lot 601 Deposited Plan 587367	Fee Simple Title	0.0368 Ha	1114094
Lot 602 Deposited Plan 587367	Fee Simple Title	0.0403 Ha	1114095
Lot 603 Deposited Plan 587367	Fee Simple Title	0.0360 Ha	1114096
Lot 604 Deposited Plan 587367	Fee Simple Title	0.0360 Ha	1114097
Lot 605 Deposited Plan 587367	Fee Simple Title	0.0360 Ha	1114098
Lot 606 Deposited Plan 587367	Fee Simple Title	0.0297 Ha	1114099
Lot 607 Deposited Plan 587367	Fee Simple Title	0.0231 Ha	1114100
Lot 608 Deposited Plan 587367	Fee Simple Title	0.0231 Ha	1114101
Lot 609 Deposited Plan 587367	Fee Simple Title	0.0297 Ha	1114102
Lot 8031 Deposited Plan 587367	Fee Simple Title	0.0230 Ha	1114103
Lot 8032 Deposited Plan 587367	Fee Simple Title	0.0225 Ha	1114103
Lot 8033 Deposited Plan 587367	Fee Simple Title	0.0219 Ha	1114104
Lot 8034 Deposited Plan 587367	Fee Simple Title	0.0213 Ha	1114104
Lot 8035 Deposited Plan 587367	Fee Simple Title	0.0208 Ha	1114105
Lot 8036 Deposited Plan 587367	Fee Simple Title	0.0202 Ha	1114105
Lot 8037 Deposited Plan 587367	Fee Simple Title	0.0384 Ha	Multiple
Area A Deposited Plan 587367	Easement		
Area AC Deposited Plan 587367	Easement		
Area B Deposited Plan 587367	Easement		
Area CA Deposited Plan 587367	Easement		
Area CB Deposited Plan 587367	Easement		
Area F Deposited Plan 587367	Easement		
Total Area		22.8976 Ha	



S&L Project Reference: 30378-19 – Area LUK – Stage 19

Land Registration District

South Auckland

Plan Number

DP 587367

Territorial Authority (the Council)

Hamilton City Council

Memorandum of Easements			
Purpose	Shown	Burdened Land	Benefited Land
Right of way Right to convey electricity, telecommunications and gas Right to drain water and sewage	B	Lot 8037 hereon	Lots 8031-8036 hereon

Schedule of Existing Easements in Gross				
Purpose	Shown	Burdened Land	Grantee	Document Number
Right to convey electricity and telecommunications	F	Lot 20 hereon	Transpower New Zealand Limited	EI 10700635.1
Right to convey electricity and telecommunications	AC	Lot 20 hereon	Transpower New Zealand Limited	EI 11070524.14
	CB	Lot 20 hereon		
	CA	Lot 310 hereon		
Right to convey electricity and telecommunications	A	Lot 20 hereon	WEL Networks Limited	EI 12582161.2
	AC	Lot 20 hereon		



S&L Project Reference: 30378-19 – Area LUK – Stage 19

Land Registration District

South Auckland

Plan Number

DP 587367

Territorial Authority (the Council)

Hamilton City Council

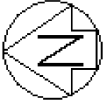
Amalgamation

That Lot 8037 hereon (legal access) be held as to six undivided one-sixth shares by the owners of Lots 8031, 8032, 8033, 8034, 8035 and 8036 hereon and individual records of title be issued in accordance therewith.

That Lots 8031 & 8032 hereon be held in the same record of title.

That Lots 8033 & 8034 hereon be held in the same record of title.

That Lots 8035 & 8036 hereon be held in the same record of title.



Diag. A

Diag. AC
See T9

Diag. AD
See T10

Diag. AE
See T10

Diag. AF
See T11

Lot 1
DP 534384

Diag. AB
See T2

Diag. AA
See T2

20
21.1300Ha

Lot 301
DP 570351

Lot 302
DP 570352

Chilman Terrace (Legal Road)

Carls Road (Legal Road)
R 700.00
C1 55.295m
M-C 70.136
L 2626330
0.7155

- 104
- 581
- 582
- 583
- 584
- 585
- 586
- 587
- 588
- 589
- 590
- 591
- 592
- 593
- 594
- 595
- 596
- 597
- 598
- 599
- 600
- 601
- 602
- 603
- 604
- 605
- 606
- 607
- 608
- 609
- 257
- 310

CB

A

F

Drake Place (Legal Road)

Raleigh Avenue (Legal Road)

Rogers Place (Legal Road)

Raymond Street (Legal Road)

Raleigh Street (Legal Road)

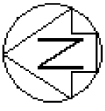
T 1/11

Title Plan
LT 587367
DRAFT

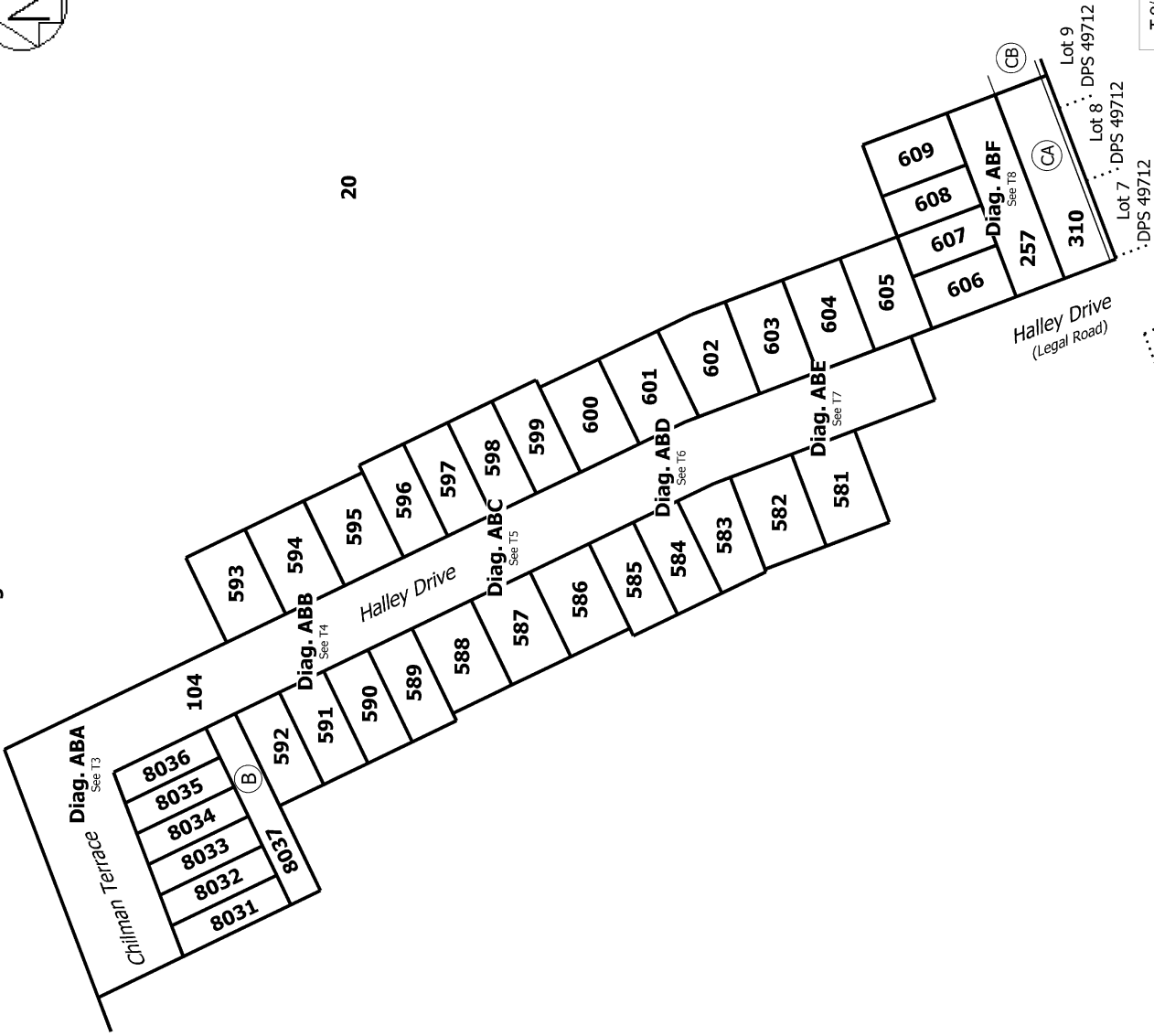
Surveyor: Scott Rodney Carley
Firm: Shrimpton and Lipinski Limited Partn

Lots 20, 104, 257, 310, 581-609 & 8031-8037 Being a Subdivision of Lot 19 DP
583917

Land District: South Auckland
Digitally Generated Plan
Generated on: 01/02/2023 3:08pm Page 5 of 15



Diag. AB

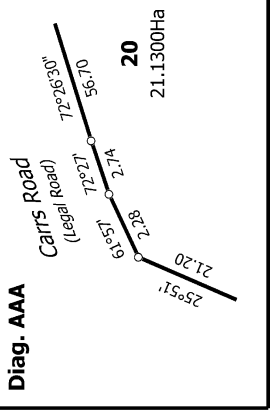


T 2/11

Title Plan
LT 587367
DRAFT

Surveyor: Scott Rodney Carley
Firm: Shrimpton and Lipinski Limited Partnr

Diag. AAA



Diag. AA

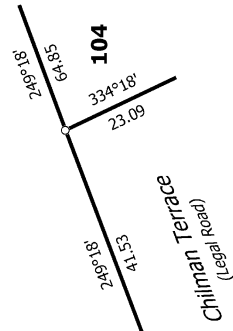


Diag. AAA
See T2

20
21.1300Ha

Chilman Terrace
(Legal Road)

334°18'
54.23



Lots 20, 104, 257, 310, 581-609 & 8031-8037 Being a Subdivision of Lot 19 DP
583917

Land District: South Auckland

Digitally Generated Plan

Generated on: 01/02/2023 3:08pm Page 6 of 15



Diag. ABD



T 6/11

Title Plan
LT 587367
DRAFT

Surveyor: Scott Rodney Carley
Firm: Shrimpton and Lipinski Limited Partn

Lots 20, 104, 257, 310, 581-609 & 8031-8037 Being a Subdivision of Lot 19 DP
583917



Diag. ABE



T 7/11

Land District: South Auckland

Digitally Generated Plan

Generated on: 07/02/2023 3:08pm Page 11 of 15

Lots 20, 104, 257, 310, 581-609 & 8031-8037 Being a Subdivision of Lot 19 DP 583917

Surveyor: Scott Rodney Carley
Firm: Shrimpton and Lipinski Limited Partn

Title Plan
LT 587367
DRAFT



Diag. ABF



T 8/11

Land District: South Auckland

Digitally Generated Plan

Generated on: 07/02/2023 3:06pm Page 12 of 15

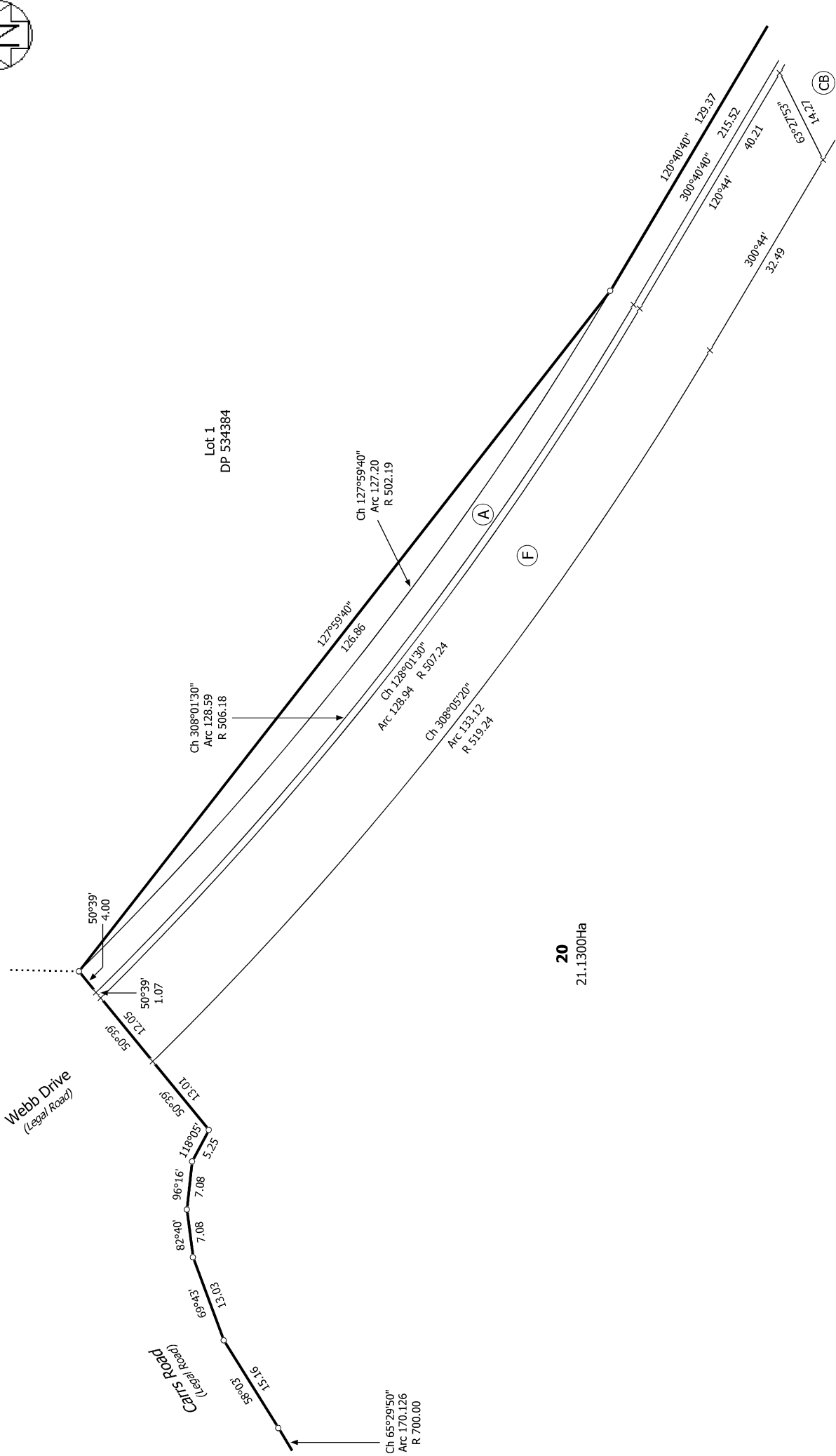
Lots 20, 104, 257, 310, 581-609 & 8031-8037 Being a Subdivision of Lot 19 DP 583917

Surveyor: Scott Rodney Carley
Firm: Shrimpton and Lipinski Limited Partn

Title Plan
LT 587367
DRAFT



Diag. AC



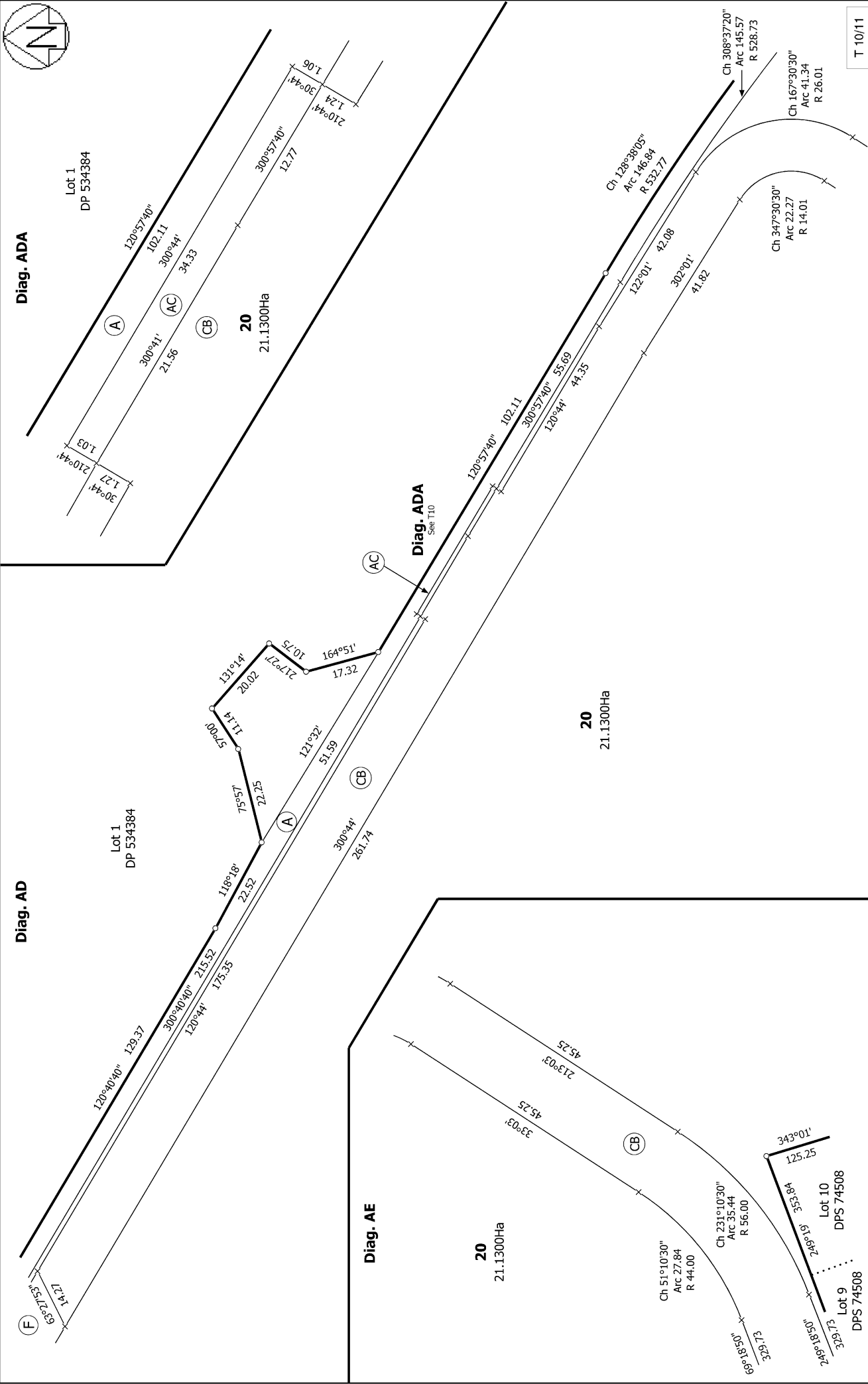
T 9/11

Title Plan
LT 587367
DRAFT

Surveyor: Scott Rodney Carley
Firm: Shrimpton and Lipinski Limited Partn

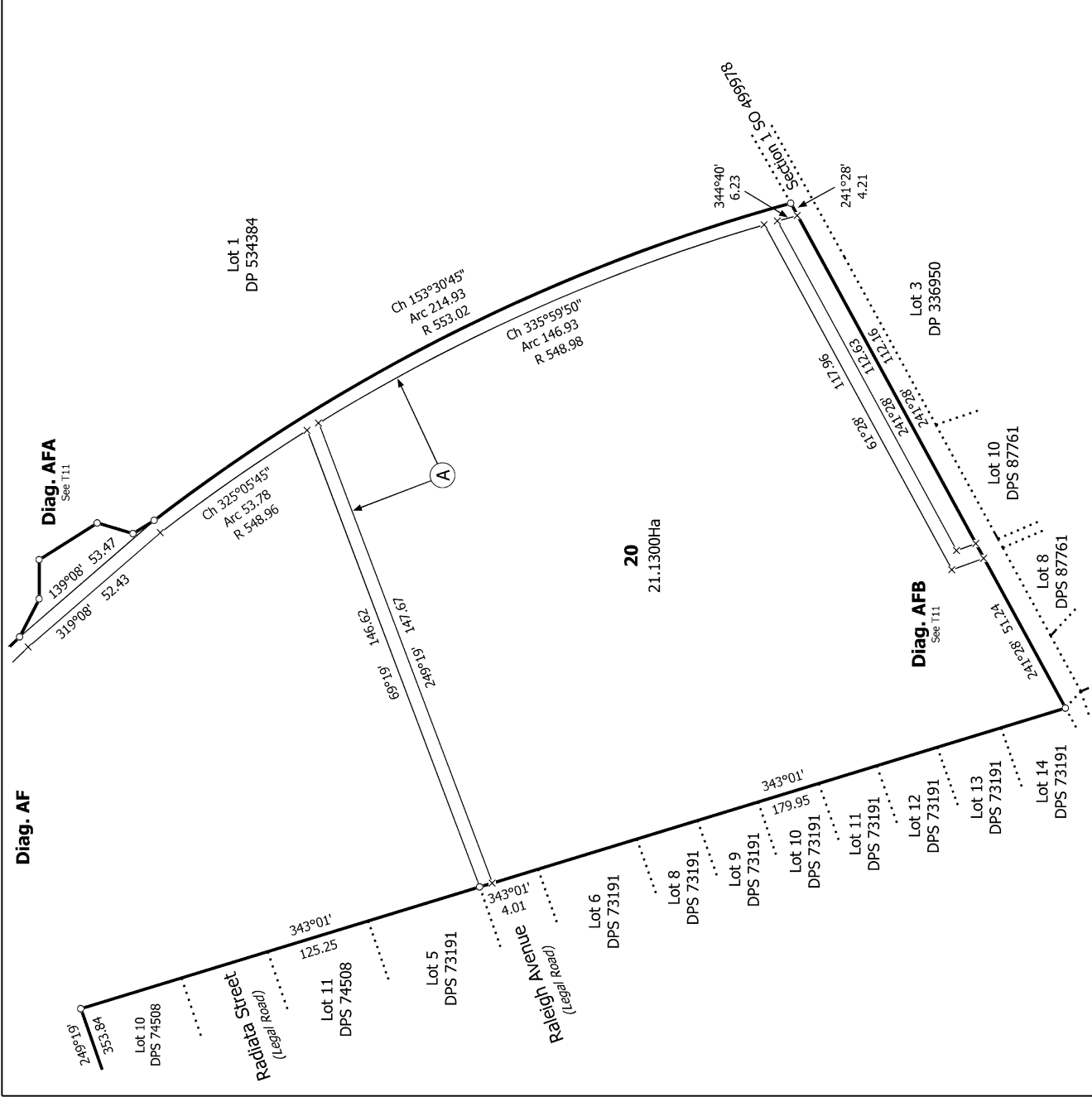
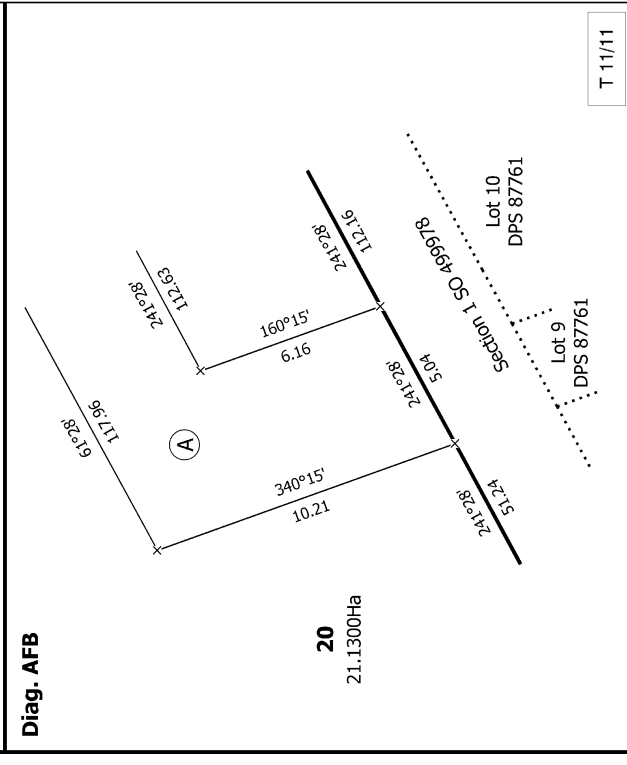
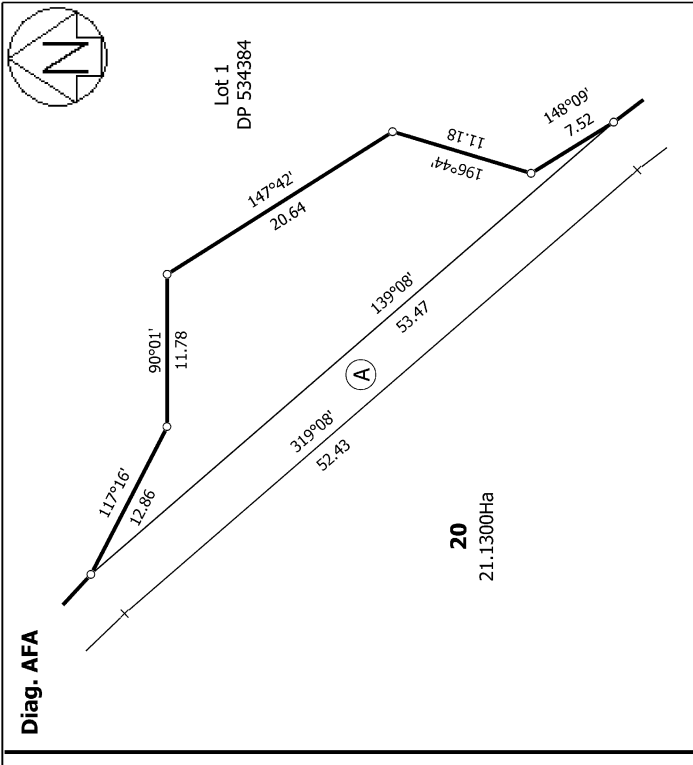
Lots 20, 104, 257, 310, 581-609 & 8031-8037 Being a Subdivision of Lot 19 DP
583917

Land District: South Auckland
Digitally Generated Plan
Generated on: 07/02/2023 3:06pm Page 13 of 15



T 10/11

<p>Land District: South Auckland</p> <p>Digitally Generated Plan</p> <p>Generated on: 07/02/2023 3:06pm Page 14 of 15</p>	<p>Lots 20, 104, 257, 310, 581-609 & 8031-8037 Being a Subdivision of Lot 19 DP 583917</p>	<p>Surveyor: Scott Rodney Carley</p> <p>Firm: Shrimpton and Lipinski Limited Partn</p>	<p>Title Plan</p> <p>LT 587367</p> <p>DRAFT</p>
--	---	--	--



T 11/11

Title Plan
LT 587367
DRAFT

Surveyor: Scott Rodney Carley
Firm: Shrimpton and Lipinski Limited Partn

Lots 20, 104, 257, 310, 581-609 & 8031-8037 Being a Subdivision of Lot 19 DP 583917

Land District: South Auckland

Digitally Generated Plan
Generated on: 07/02/2023 3:06pm Page 15 of 15