



Title Plan - DP 583917

Survey Number DP 583917
Surveyor Reference 21-30378-18 - GHP - Area LUK - Stage 18
Surveyor John Craig Tulloch
Survey Firm Shrimpton and Lipinski Limited Partnership
Surveyor Declaration I John Craig Tulloch, being a licensed cadastral surveyor, certify that--
(a) this dataset provided by me and its related survey are accurate, correct and in accordance with the Cadastral Survey Act 2002 and Cadastral Survey Rules 2021; and
(b) the survey was undertaken by me or under my personal direction.
Declared on 06 Mar 2023 04:16 PM

Survey Details

Dataset Description Lots 19, 103, 160, 304, 306-309 & 536-580 Being a Subdivision of Lot 2 DP 570352
Status Deposited
Land District South Auckland
Submitted Date 06/03/2023
Survey Class Class A
Survey Approval Date 15/03/2023
Deposit Date 06/03/2023

Territorial Authorities

Hamilton City

Comprised In

RT 1030271

Created Parcels

Parcels	Parcel Intent	Area	RT Reference
Lot 306 Deposited Plan 583917	Vesting on Deposit for Local Purpose Reserve	0.1306 Ha	1098494
Lot 19 Deposited Plan 583917	Fee Simple Title	22.9000 Ha	1098491
	Road	0.9899 Ha	
Lot 160 Deposited Plan 583917	Vesting on Deposit for Local Purpose Reserve	0.0208 Ha	1098492
Lot 304 Deposited Plan 583917	Vesting on Deposit for Local Purpose Reserve	0.6511 Ha	1098493
Lot 307 Deposited Plan 583917	Vesting on Deposit for Local Purpose Reserve	0.0100 Ha	1098495
Lot 308 Deposited Plan 583917	Vesting on Deposit for Recreation Reserve (Territorial Authority)	0.3611 Ha	1098496
Lot 309 Deposited Plan 583917	Vesting on Deposit for Recreation Reserve (Territorial Authority)	0.0566 Ha	1098497
Lot 536 Deposited Plan 583917	Fee Simple Title	0.0394 Ha	1098498
Lot 537 Deposited Plan 583917	Fee Simple Title	0.0375 Ha	1098499
Lot 538 Deposited Plan 583917	Fee Simple Title	0.0375 Ha	1098500
Lot 539 Deposited Plan 583917	Fee Simple Title	0.0300 Ha	1098501
Lot 540 Deposited Plan 583917	Fee Simple Title	0.0306 Ha	1098502

Title Plan - DP 583917

Created Parcels

Parcels	Parcel Intent	Area	RT Reference
Lot 541 Deposited Plan 583917	Fee Simple Title	0.0308 Ha	1098503
Lot 542 Deposited Plan 583917	Fee Simple Title	0.0367 Ha	1098504
Lot 543 Deposited Plan 583917	Fee Simple Title	0.0367 Ha	1098505
Lot 544 Deposited Plan 583917	Fee Simple Title	0.0294 Ha	1098506
Lot 545 Deposited Plan 583917	Fee Simple Title	0.0294 Ha	1098507
Lot 546 Deposited Plan 583917	Fee Simple Title	0.0405 Ha	1098508
Lot 547 Deposited Plan 583917	Fee Simple Title	0.0270 Ha	1098509
Lot 548 Deposited Plan 583917	Fee Simple Title	0.0210 Ha	1098510
Lot 549 Deposited Plan 583917	Fee Simple Title	0.0210 Ha	1098511
Lot 550 Deposited Plan 583917	Fee Simple Title	0.0300 Ha	1098512
Lot 551 Deposited Plan 583917	Fee Simple Title	0.0227 Ha	1098513
Lot 552 Deposited Plan 583917	Fee Simple Title	0.0210 Ha	1098514
Lot 553 Deposited Plan 583917	Fee Simple Title	0.0210 Ha	1098515
Lot 554 Deposited Plan 583917	Fee Simple Title	0.0210 Ha	1098516
Lot 555 Deposited Plan 583917	Fee Simple Title	0.0210 Ha	1098517
Lot 556 Deposited Plan 583917	Fee Simple Title	0.0210 Ha	1098518
Lot 557 Deposited Plan 583917	Fee Simple Title	0.0230 Ha	1098519
Lot 558 Deposited Plan 583917	Fee Simple Title	0.0210 Ha	1098520
Lot 559 Deposited Plan 583917	Fee Simple Title	0.0210 Ha	1098521
Lot 560 Deposited Plan 583917	Fee Simple Title	0.0300 Ha	1098522
Lot 561 Deposited Plan 583917	Fee Simple Title	0.0210 Ha	1098523
Lot 562 Deposited Plan 583917	Fee Simple Title	0.0210 Ha	1098524
Lot 563 Deposited Plan 583917	Fee Simple Title	0.0210 Ha	1098525
Lot 564 Deposited Plan 583917	Fee Simple Title	0.0210 Ha	1098526
Lot 565 Deposited Plan 583917	Fee Simple Title	0.0255 Ha	1098527
Lot 566 Deposited Plan 583917	Fee Simple Title	0.0368 Ha	1098528
Lot 567 Deposited Plan 583917	Fee Simple Title	0.0368 Ha	1098529
Lot 568 Deposited Plan 583917	Fee Simple Title	0.0368 Ha	1098530
Lot 569 Deposited Plan 583917	Fee Simple Title	0.0300 Ha	1098531
Lot 570 Deposited Plan 583917	Fee Simple Title	0.0300 Ha	1098532
Lot 571 Deposited Plan 583917	Fee Simple Title	0.0300 Ha	1098533
Lot 572 Deposited Plan 583917	Fee Simple Title	0.0300 Ha	1098534
Lot 573 Deposited Plan 583917	Fee Simple Title	0.0368 Ha	1098535
Lot 574 Deposited Plan 583917	Fee Simple Title	0.0437 Ha	1098536
Lot 575 Deposited Plan 583917	Fee Simple Title	0.0384 Ha	1098537
Lot 576 Deposited Plan 583917	Fee Simple Title	0.0395 Ha	1098538
Lot 577 Deposited Plan 583917	Fee Simple Title	0.0283 Ha	1098539
Lot 578 Deposited Plan 583917	Fee Simple Title	0.0220 Ha	1098540
Lot 579 Deposited Plan 583917	Fee Simple Title	0.0220 Ha	1098541
Lot 580 Deposited Plan 583917	Fee Simple Title	0.0283 Ha	1098542
Area A Deposited Plan 583917	Easement		
Area AC Deposited Plan 583917	Easement		
Area BA Deposited Plan 583917	Easement		
Area BB Deposited Plan 583917	Easement		



Title Plan - DP 583917

Created Parcels

Parcels	Parcel Intent	Area	RT Reference
Area C Deposited Plan 583917	Easement		
Area F Deposited Plan 583917	Easement		
Area M Deposited Plan 583917	Easement		
Area U Deposited Plan 583917	Easement		
Total Area		<hr/> 26.4192 Ha	



Land Specialists
Your Property, Our Environment

S&L Project Reference: 30378-18 – Area LUK – Stage 18

Land Registration District

South Auckland

Plan Number

DP 583917

Territorial Authority (the Council)

Hamilton City Council

Schedule of Existing Easements			
Purpose	Shown	Burdened Land	Document Number
Right of way	BA	Lot 308 hereon	EI 11070524.17
	BB	Lot 309 hereon	



S&L Project Reference: 30378-18 – Area LUK – Stage 18

Land Registration District

South Auckland

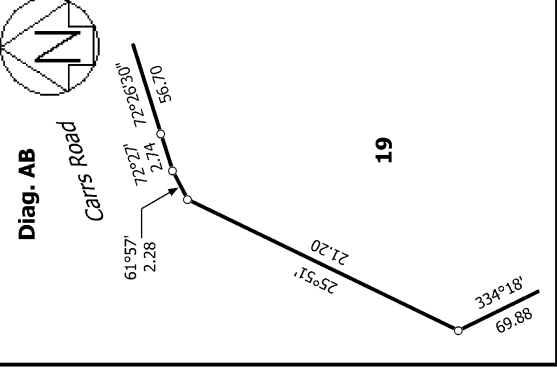
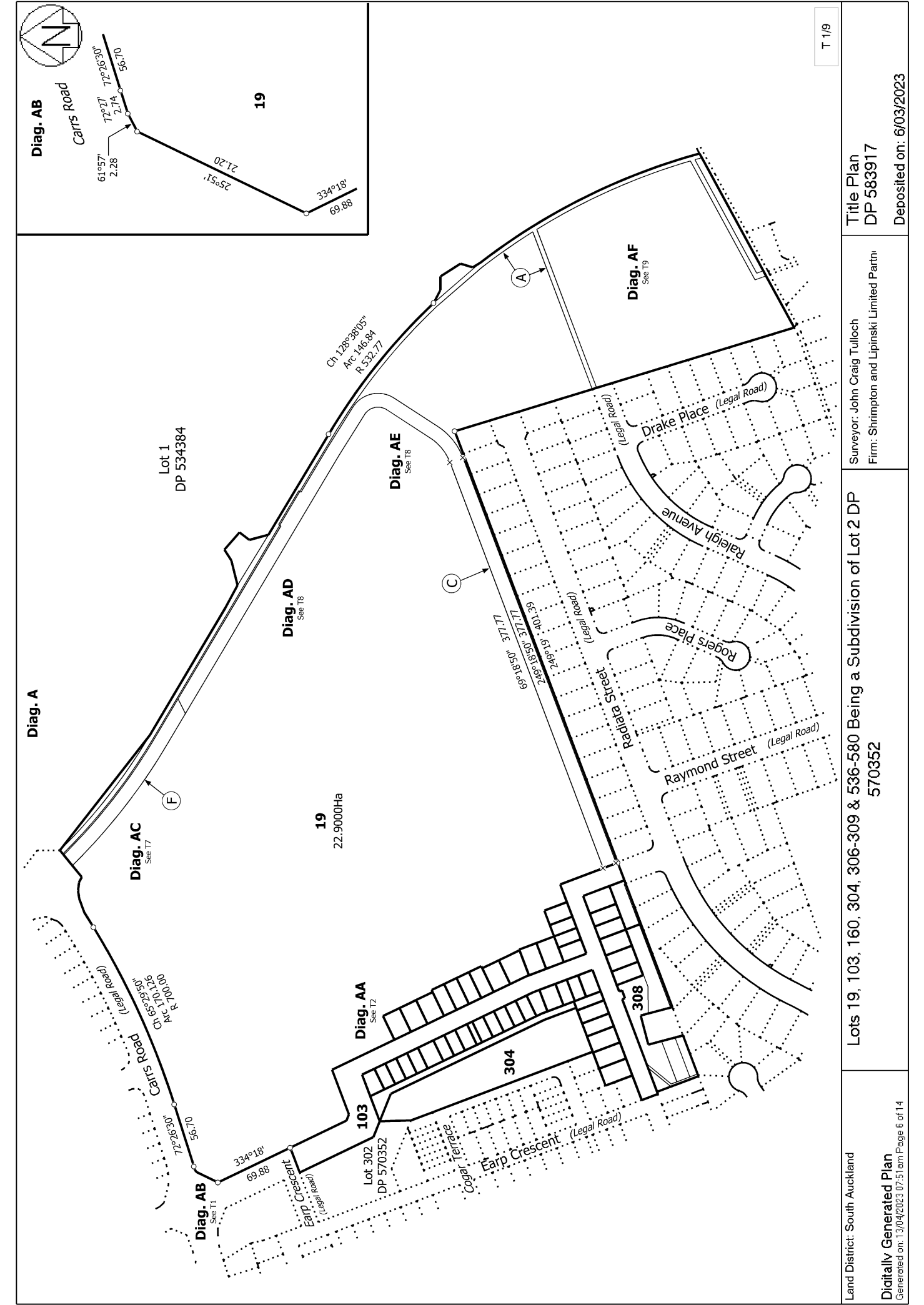
Plan Number

DP 583917

Territorial Authority (the Council)

Hamilton City Council

Schedule of Existing Easements in Gross				
Purpose	Shown	Burdened Land	Grantee	Document Number
Right to convey electricity and telecommunications	F	Lot 19 hereon	Transpower New Zealand Limited	EI 10700635.1
Right of way	BA	Lot 308 hereon	Transpower New Zealand Limited	EI 11070524.16
	BB	Lot 309 hereon		
Right to convey electricity and telecommunications	BA	Lot 308 hereon	Transpower New Zealand Limited	EI 11070524.14
	BB	Lot 309 hereon		
	AC	Lot 19 hereon		
	C	Lot 19 hereon		
Right to convey electricity for earthing purposes	BA	Lot 308 hereon	Transpower New Zealand Limited	EI 11070524.15
	BB	Lot 309 hereon		
Right to convey telecommunications and computer media	BA	Lot 308 hereon	Transpower New Zealand Limited	EI 11070524.10
	BB	Lot 309 hereon		
Right to convey, discharge and earth electricity	M	Lot 308 hereon	Transpower New Zealand Limited	EI 11070524.13
Right to convey electricity, telecommunications	A	Lot 19 hereon	WEL Networks Limited	EI 12582161.2
	AC	Lot 19 hereon		
Right to drain water	U	Lot 308 hereon	Hamilton City Council	EI 12423230.4



T 1/9

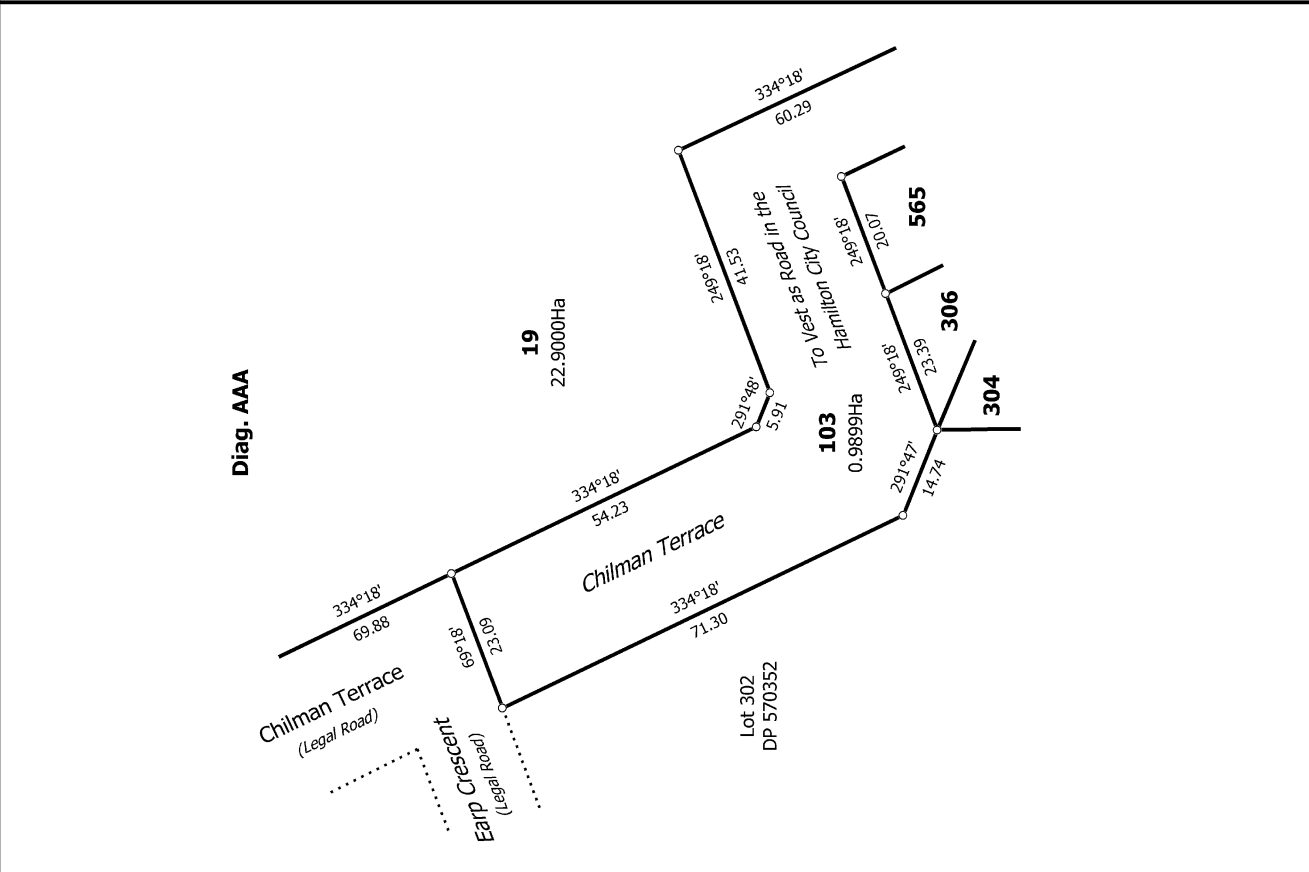
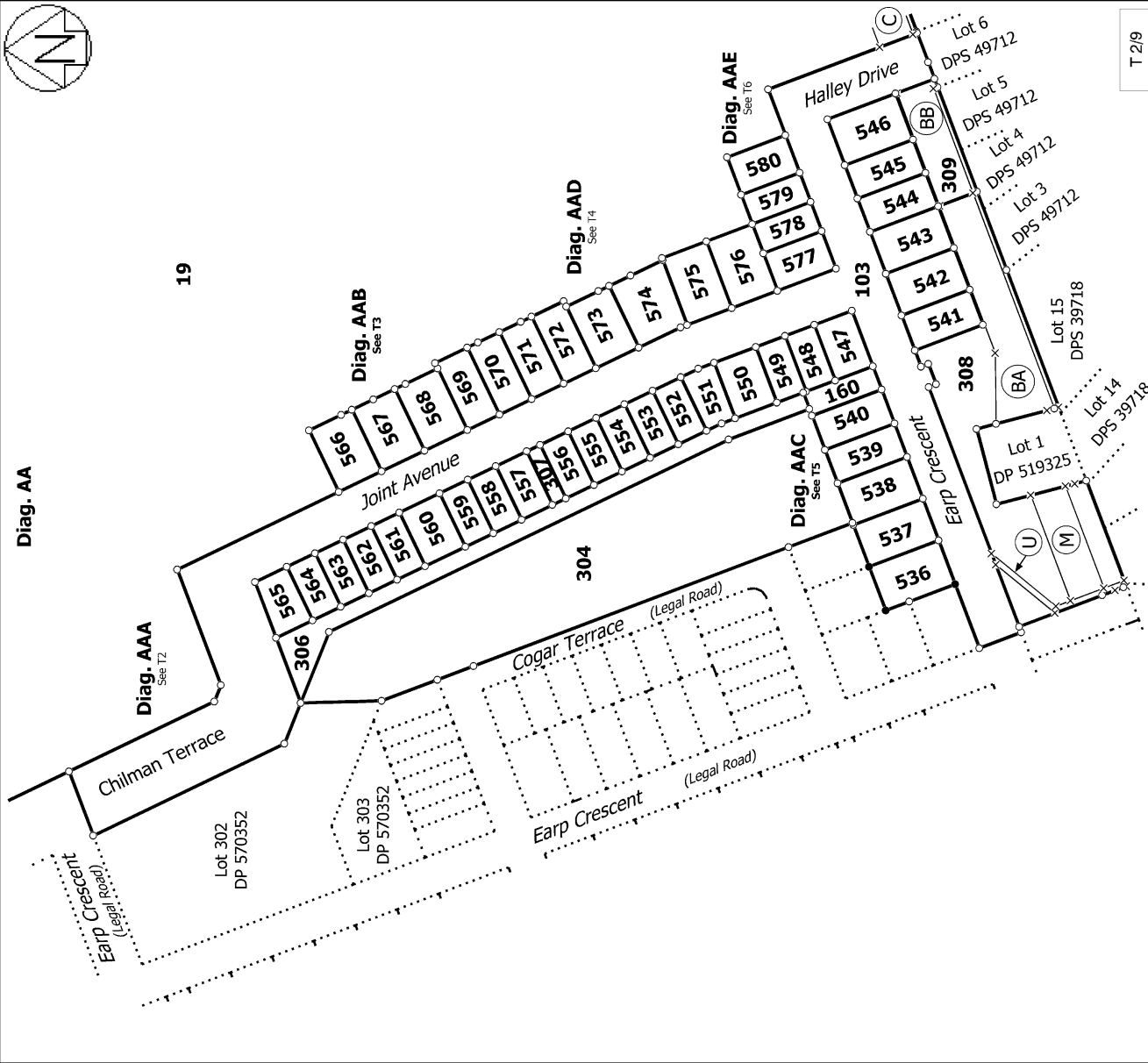
Land District: South Auckland
Digitally Generated Plan
Generated on: 13/04/2023 07:51 am; Page 6 of 14

**Title Plan
 DP 583917**

Surveyor: John Craig Tulloch
 Firm: Shrimpton and Lipinski Limited Partnr

Lots 19, 103, 160, 304, 306-309 & 536-580 Being a Subdivision of Lot 2 DP 570352

Deposited on: 6/03/2023



T 2/9

Land District: South Auckland
 Digitally Generated Plan
 Generated on: 13/04/2023 07:51:01 Page 7 of 14

Surveyor: John Craig Tulloch
 Firm: Shrimpton and Lipinski Limited Partnr

Lots 19, 103, 160, 304, 306-309 & 536-580 Being a Subdivision of Lot 2 DP 570352

Title Plan
 DP 583917

Deposited on: 6/03/2023



Diag. AAB

To Vest as Local Purpose Reserve (Pedestrian Access) in the Hamilton City Council



T 3/9

Land District: South Auckland

Digitally Generated Plan

Generated on: 13/04/2023 07:51 am | Page 8 of 14

Lots 19, 103, 160, 304, 306-309 & 536-580 Being a Subdivision of Lot 2 DP 570352

Surveyor: John Craig Tulloch
Firm: Shrimpton and Lipinski Limited Partn

Title Plan
DP 583917

Deposited on: 6/03/2023



Diag. AAD



T 4/9

Land District: South Auckland

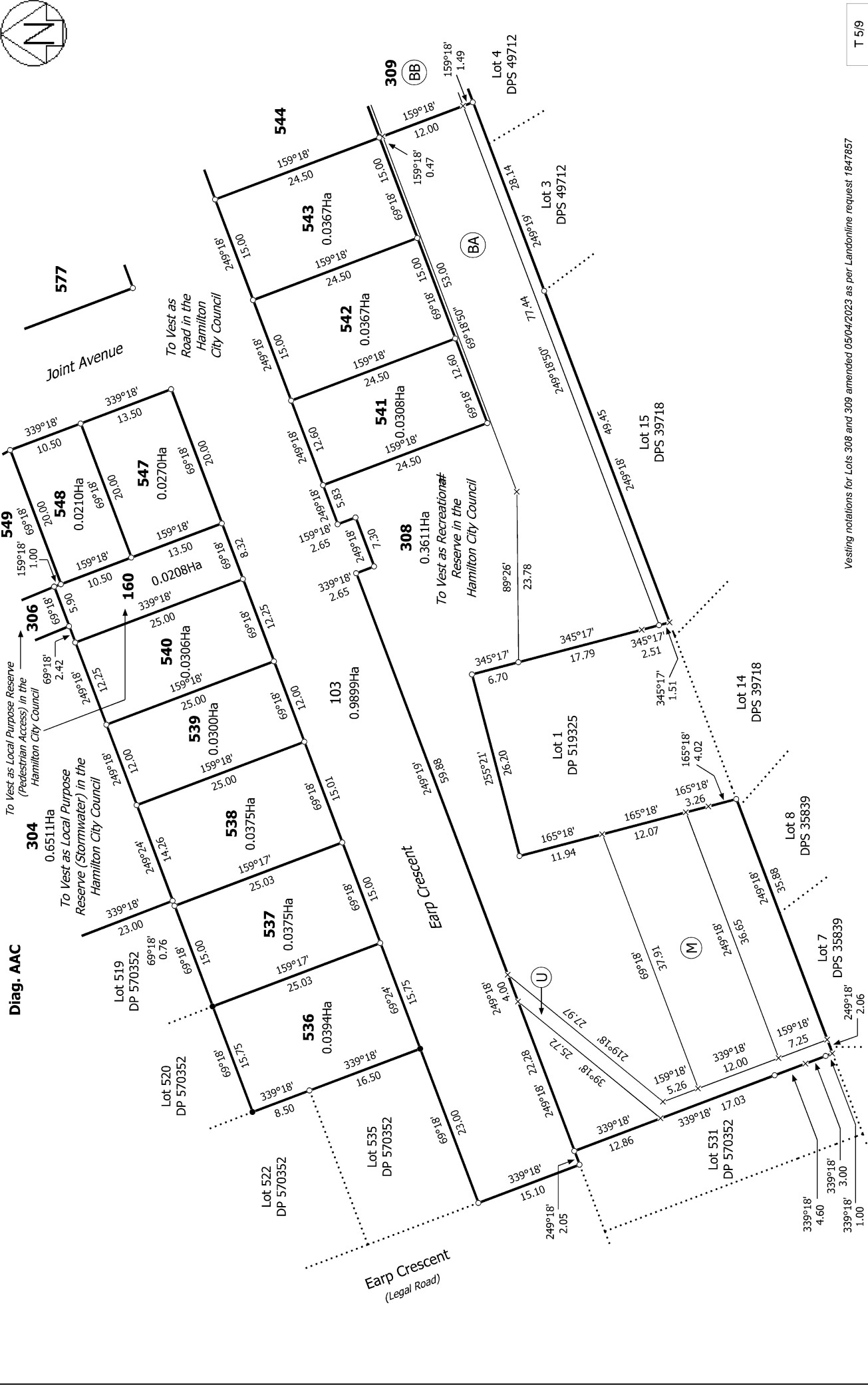
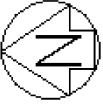
Digitally Generated Plan
Generated on: 13/04/2023 07:51 am Page 9 of 14

Lots 19, 103, 160, 304, 306-309 & 536-580 Being a Subdivision of Lot 2 DP 570352

Surveyor: John Craig Tulloch
Firm: Shrimpton and Lipinski Limited Partnr

Title Plan DP 583917

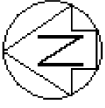
Deposited on: 6/03/2023



Vesting notations for Lots 308 and 309 amended 05/04/2023 as per Landonline request 1847857

T 5/9

<p>Land District: South Auckland</p> <p>Digitally Generated Plan</p> <p>Generated on: 13/04/2023 07:51:am Page 10 of 14</p>	<p>Lots 19, 103, 160, 304, 306-309 & 536-580 Being a Subdivision of Lot 2 DP 570352</p> <p>Surveyor: John Craig Tulloch Firm: Shrimpton and Lipinski Limited Partn</p>	<p>Title Plan DP 583917</p> <p>Deposited on: 6/03/2023</p>
--	---	---



Diag. AAE



T 6/9

Vesting notations for Lots 308 and 309 amended 05/04/2023 as per Landonline request 1847857

Land District: South Auckland
 Digitally Generated Plan
 Generated on: 13/04/2023 07:51 am Page 11 of 14

Lots 19, 103, 160, 304, 306-309 & 536-580 Being a Subdivision of Lot 2 DP 570352

Surveyor: John Craig Tulloch
 Firm: Shrimpton and Lipinski Limited Partn

Title Plan
 DP 583917

Deposited on: 6/03/2023



Diag. AC

Webb Drive
(Legal Road)

Carrs Road
(Legal Road)

Lot 1
DP 534384

19
22.9000Ha

Ch 65°29'50"
Arc 170.126
R 700.00

50°39'
12.05

50°39'
1.07

50°39'

13.01

50°39'

13.01

50°39'

4.00

50°39'

12.05

50°39'

13.01

50°39'

13.01

50°39'

13.01

50°39'

13.01

Ch 127°59'40"
Arc 127.20
R 502.19

Ch 308°01'30"
Arc 128.59
R 506.18

Ch 127°59'40"
Arc 126.86

Ch 128°01'30"
Arc 128.94 R 507.24

Ch 308°05'20"
Arc 133.12
R 519.24

120°40'40" 129.37

300°40'40" 215.54

120°44' 40.21

300°44' 32.49

63°27'53" 14.21

120°40'40" 129.37

300°40'40" 215.54

120°44' 40.21

300°44' 32.49

63°27'53" 14.21

T 7/9

Land District: South Auckland

Digitally Generated Plan

Generated on: 13/04/2023 07:51 am | Page 12 of 14

Lots 19, 103, 160, 304, 306-309 & 536-580 Being a Subdivision of Lot 2 DP

570352

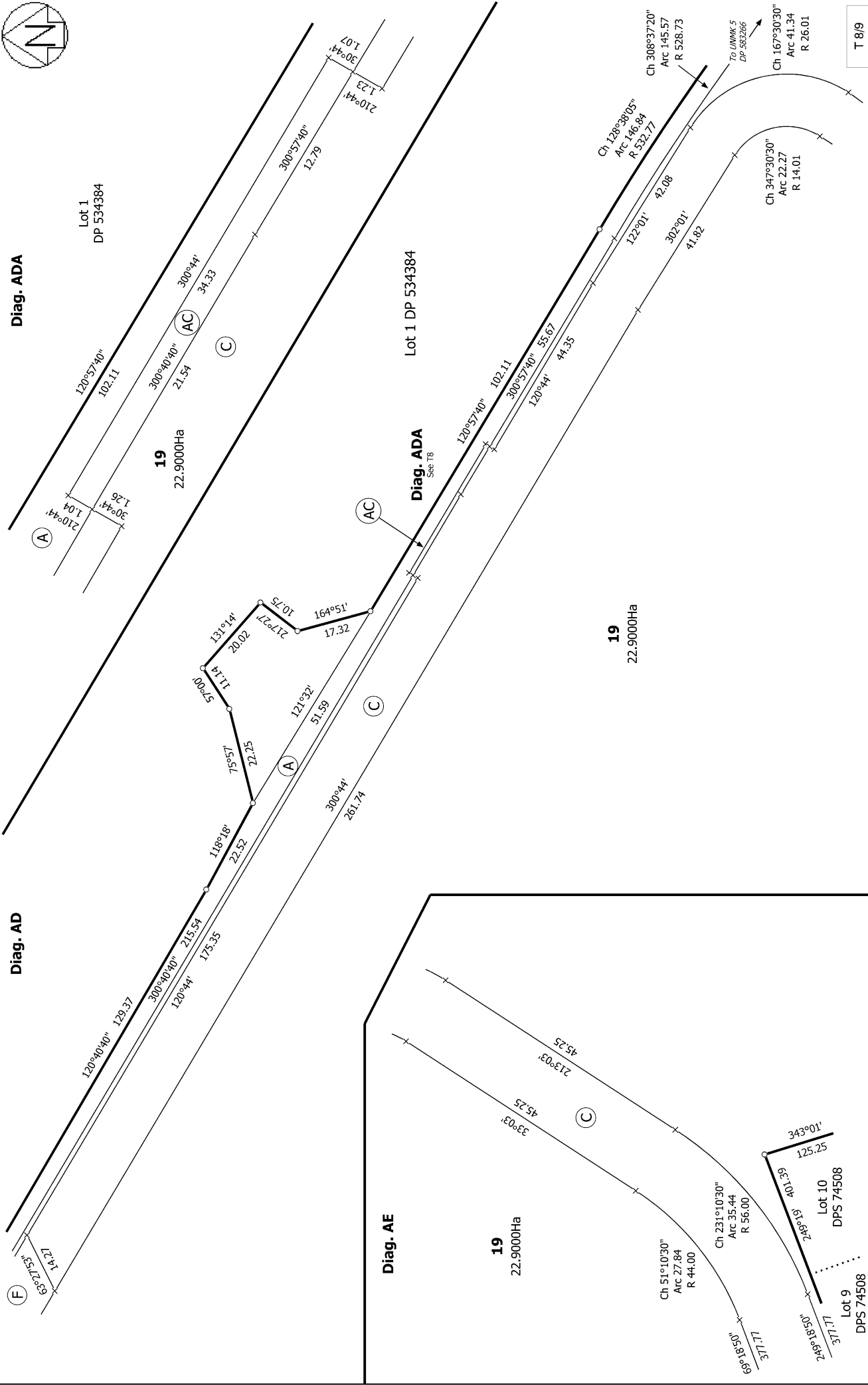
Surveyor: John Craig Tulloch

Firm: Shrimpton and Lipinski Limited Partn

Title Plan

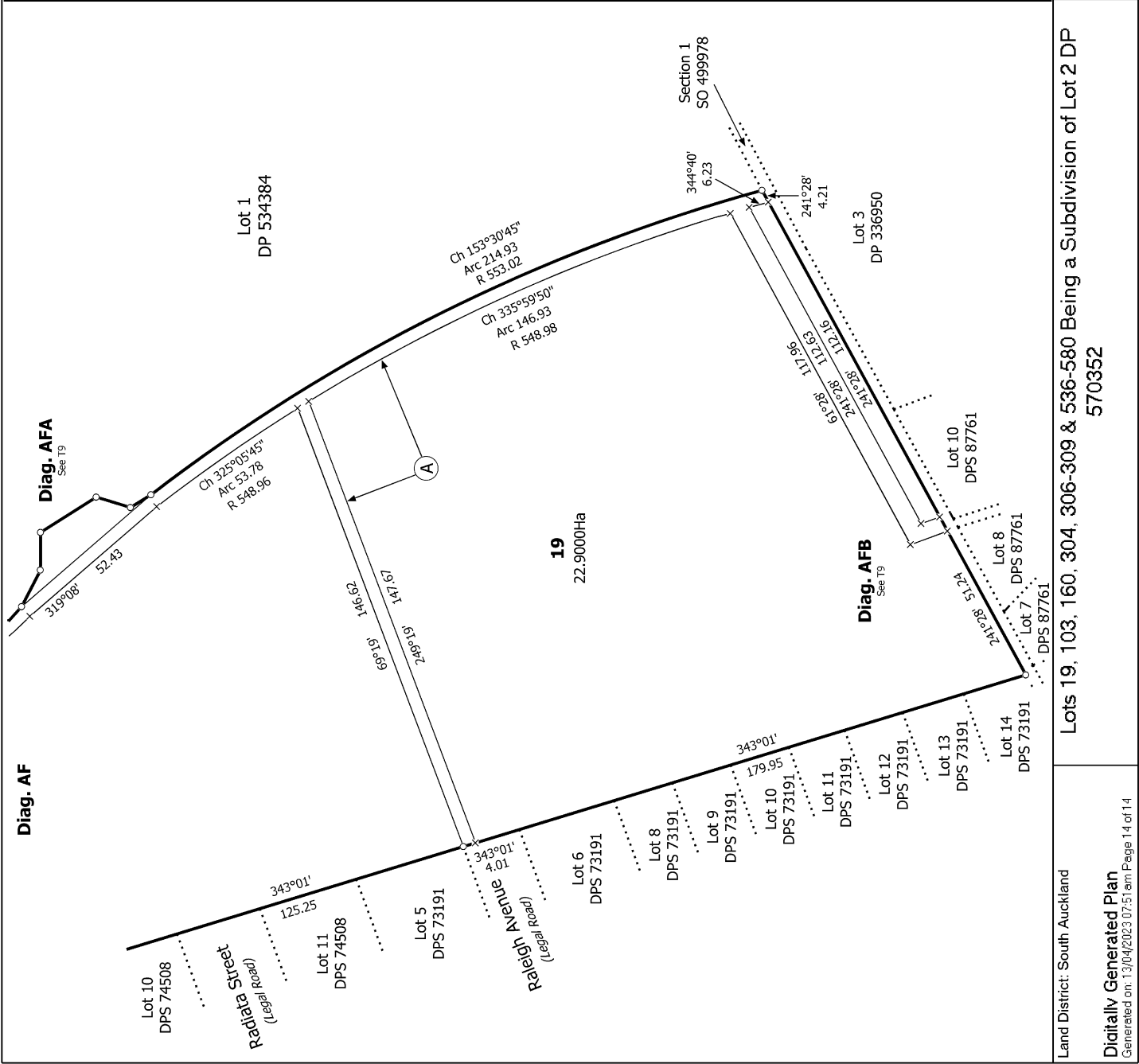
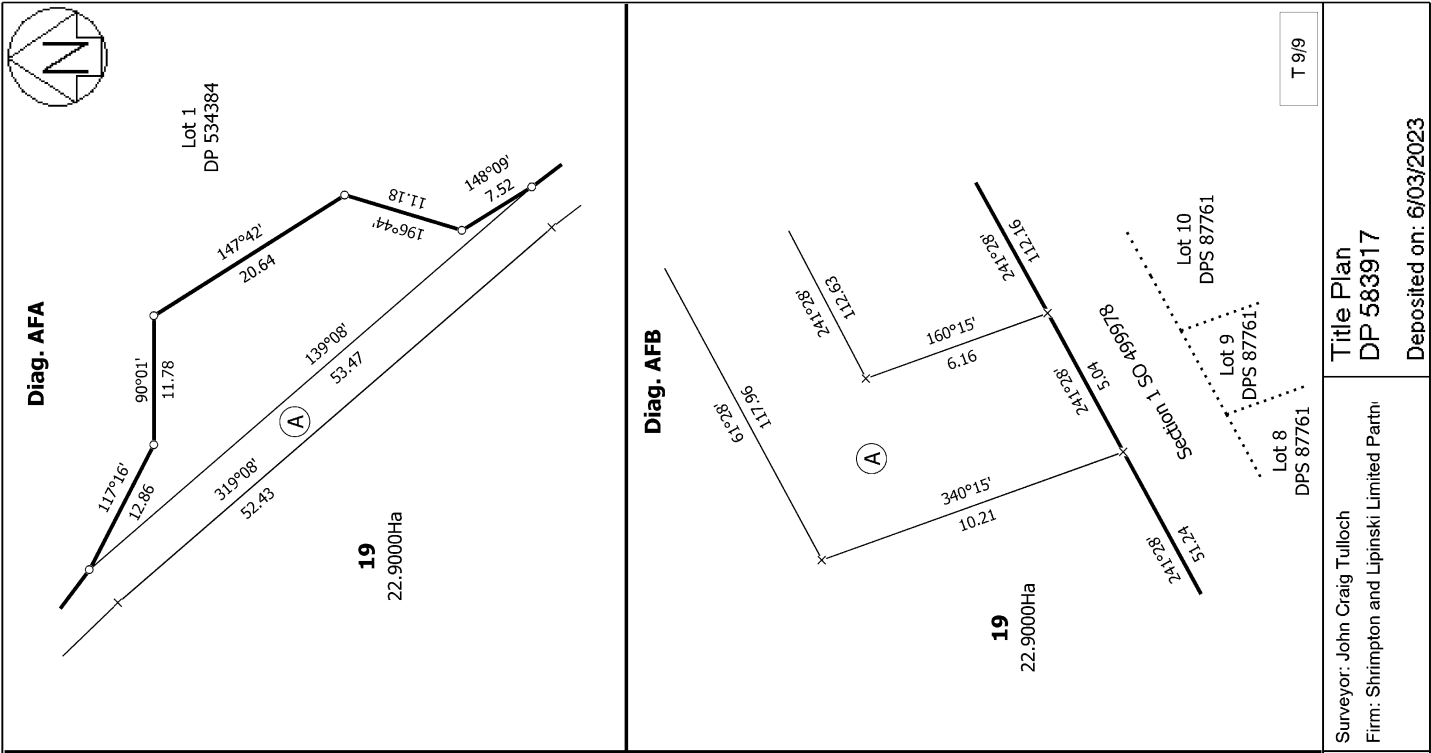
DP 583917

Deposited on: 6/03/2023



T 8/9

<p>Land District: South Auckland</p>	<p>Surveyor: John Craig Tulloch Firm: Shrimpton and Lipinski Limited Partnr</p>	<p>Title Plan DP 583917</p>
<p>Lots 19, 103, 160, 304, 306-309 & 536-580 Being a Subdivision of Lot 2 DP 570352</p>		
<p>Digitally Generated Plan Generated on: 13/04/2023 07:51 am Page 13 of 14</p>		
<p>Deposited on: 6/03/2023</p>		



T 9/9

Surveyor: John Craig Tulloch
Firm: Shrimpton and Lipinski Limited Partn

Title Plan
DP 583917

Deposited on: 6/03/2023

Land District: South Auckland

Digitally Generated Plan
Generated on: 13/04/2023 07:51:am Page 14 of 14

Lots 19, 103, 160, 304, 306-309 & 536-580 Being a Subdivision of Lot 2 DP 570352