



# Title Plan - LT 570352

---

**Survey Number** LT 570352  
**Surveyor Reference** 30378-05 - Area LUK - Stage 17  
**Surveyor** Scott Rodney Carley  
**Survey Firm** Shrimpton and Lipinski Limited Partnership  
**Surveyor Declaration**

---

## Survey Details

**Dataset Description** Lots 2, 141, 302, 303, 305, 481-535 and 8025-8030 Being a Subdivision of Lot 2 DP 570351  
**Status** Initiated  
**Land District** South Auckland  
**Submitted Date**  
**Survey Class** Class A  
**Survey Approval Date**  
**Deposit Date**

---

## Territorial Authorities

Hamilton City

---

## Comprised In

RT 1030213

---

## Created Parcels

Parcels	Parcel Intent	Area	RT Reference
Lot 2 Deposited Plan 570352	Fee Simple Title	26.4200 Ha	1030271
Lot 141 Deposited Plan 570352	Vesting on Deposit for Road	0.6724 Ha	
Lot 302 Deposited Plan 570352	Vesting on Deposit for Local Purpose Reserve	0.4449 Ha	1030272
Lot 303 Deposited Plan 570352	Vesting on Deposit for Recreation Reserve (Territorial Authority)	0.0902 Ha	1030273
Lot 305 Deposited Plan 570352	Vesting on Deposit for Recreation Reserve (Territorial Authority)	0.0276 Ha	1030274
Lot 481 Deposited Plan 570352	Fee Simple Title	0.0376 Ha	1030275
Lot 482 Deposited Plan 570352	Fee Simple Title	0.0380 Ha	1030276
Lot 483 Deposited Plan 570352	Fee Simple Title	0.0450 Ha	1030277
Lot 484 Deposited Plan 570352	Fee Simple Title	0.0455 Ha	1030278
Lot 485 Deposited Plan 570352	Fee Simple Title	0.0461 Ha	1030279
Lot 486 Deposited Plan 570352	Fee Simple Title	0.0467 Ha	1030280
Lot 487 Deposited Plan 570352	Fee Simple Title	0.0404 Ha	1030281
Lot 488 Deposited Plan 570352	Fee Simple Title	0.0409 Ha	1030282
Lot 489 Deposited Plan 570352	Fee Simple Title	0.0413 Ha	1030283
Lot 490 Deposited Plan 570352	Fee Simple Title	0.0418 Ha	1030284
Lot 491 Deposited Plan 570352	Fee Simple Title	0.0287 Ha	1030285
Lot 492 Deposited Plan 570352	Fee Simple Title	0.0295 Ha	1030286
Lot 493 Deposited Plan 570352	Fee Simple Title	0.0287 Ha	1030287
Lot 494 Deposited Plan 570352	Fee Simple Title	0.0345 Ha	1030288

# Title Plan - LT 570352

---

## Created Parcels

Parcels	Parcel Intent	Area	RT Reference
Lot 495 Deposited Plan 570352	Fee Simple Title	0.0345 Ha	1030289
Lot 496 Deposited Plan 570352	Fee Simple Title	0.0345 Ha	1030290
Lot 497 Deposited Plan 570352	Fee Simple Title	0.0345 Ha	1030291
Lot 498 Deposited Plan 570352	Fee Simple Title	0.0345 Ha	1030292
Lot 499 Deposited Plan 570352	Fee Simple Title	0.0345 Ha	1030293
Lot 500 Deposited Plan 570352	Fee Simple Title	0.0345 Ha	1030294
Lot 501 Deposited Plan 570352	Fee Simple Title	0.0345 Ha	1030295
Lot 502 Deposited Plan 570352	Fee Simple Title	0.0345 Ha	1030296
Lot 503 Deposited Plan 570352	Fee Simple Title	0.0345 Ha	1030297
Lot 504 Deposited Plan 570352	Fee Simple Title	0.0287 Ha	1030298
Lot 505 Deposited Plan 570352	Fee Simple Title	0.0295 Ha	1030299
Lot 506 Deposited Plan 570352	Fee Simple Title	0.0287 Ha	1030300
Lot 507 Deposited Plan 570352	Fee Simple Title	0.0312 Ha	1030301
Lot 508 Deposited Plan 570352	Fee Simple Title	0.0312 Ha	1030302
Lot 509 Deposited Plan 570352	Fee Simple Title	0.0312 Ha	1030303
Lot 510 Deposited Plan 570352	Fee Simple Title	0.0312 Ha	1030304
Lot 511 Deposited Plan 570352	Fee Simple Title	0.0312 Ha	1030305
Lot 512 Deposited Plan 570352	Fee Simple Title	0.0225 Ha	1030306
Lot 513 Deposited Plan 570352	Fee Simple Title	0.0210 Ha	1030307
Lot 514 Deposited Plan 570352	Fee Simple Title	0.0210 Ha	1030308
Lot 515 Deposited Plan 570352	Fee Simple Title	0.0210 Ha	1030309
Lot 516 Deposited Plan 570352	Fee Simple Title	0.0210 Ha	1030310
Lot 517 Deposited Plan 570352	Fee Simple Title	0.0210 Ha	1030311
Lot 518 Deposited Plan 570352	Fee Simple Title	0.0230 Ha	1030312
Lot 519 Deposited Plan 570352	Fee Simple Title	0.0362 Ha	1030313
Lot 520 Deposited Plan 570352	Fee Simple Title	0.0362 Ha	1030314
Lot 521 Deposited Plan 570352	Fee Simple Title	0.0379 Ha	1030315
Lot 522 Deposited Plan 570352	Fee Simple Title	0.0345 Ha	1030316
Lot 523 Deposited Plan 570352	Fee Simple Title	0.0422 Ha	1030317
Lot 524 Deposited Plan 570352	Fee Simple Title	0.0498 Ha	1030318
Lot 525 Deposited Plan 570352	Fee Simple Title	0.1512 Ha	1030319
Lot 526 Deposited Plan 570352	Fee Simple Title	0.0538 Ha	1030320
Lot 527 Deposited Plan 570352	Fee Simple Title	0.0538 Ha	1030321
Lot 528 Deposited Plan 570352	Fee Simple Title	0.0538 Ha	1030322
Lot 529 Deposited Plan 570352	Fee Simple Title	0.0461 Ha	1030323
Lot 530 Deposited Plan 570352	Fee Simple Title	0.0461 Ha	1030324
Lot 531 Deposited Plan 570352	Fee Simple Title	0.0461 Ha	1030325
Lot 532 Deposited Plan 570352	Fee Simple Title	0.0425 Ha	1030326
Lot 533 Deposited Plan 570352	Fee Simple Title	0.0300 Ha	1030327
Lot 534 Deposited Plan 570352	Fee Simple Title	0.0425 Ha	1030328
Lot 535 Deposited Plan 570352	Fee Simple Title	0.0379 Ha	1030329
Lot 8025 Deposited Plan 570352	Fee Simple Title	0.0225 Ha	1030330
Lot 8026 Deposited Plan 570352	Fee Simple Title	0.0175 Ha	1030330
Lot 8027 Deposited Plan 570352	Fee Simple Title	0.0175 Ha	1030331

# Title Plan - LT 570352

---

## Created Parcels

Parcels	Parcel Intent	Area	RT Reference
Lot 8028 Deposited Plan 570352	Fee Simple Title	0.0175 Ha	1030331
Lot 8029 Deposited Plan 570352	Fee Simple Title	0.0175 Ha	1030332
Lot 8030 Deposited Plan 570352	Fee Simple Title	0.0219 Ha	1030332
Area B Deposited Plan 570352	Easement		
Area C Deposited Plan 570352	Easement		
Area F Deposited Plan 570352	Easement		
Area L Deposited Plan 570352	Easement		
Area M Deposited Plan 570352	Easement		
Area N Deposited Plan 570352	Easement		
Area O Deposited Plan 570352	Easement		
Area P Deposited Plan 570352	Easement		
Area R Deposited Plan 570352	Easement		
Area S Deposited Plan 570352	Easement		
Area T Deposited Plan 570352	Easement		
Area U Deposited Plan 570352	Easement		
Area W Deposited Plan 570352	Easement		
Area X Deposited Plan 570352	Easement		
Area V Deposited Plan 570352	Easement		
<b>Total Area</b>		29.8587 Ha	



**S&L Project Reference: 30378-05 – Area LUK – Stage 17**

Land Registration District

**South Auckland**

Plan Number

**DP 570352**

Territorial Authority (the Council)

**Hamilton City Council**

<b>Schedule of Easements in Gross</b>			
<b>Purpose</b>	<b>Shown</b>	<b>Burdened Land</b>	<b>Grantee</b>
Right to drain water	L	Lot 525 hereon	Hamilton City Council
	N	Lot 526 hereon	
	O	Lot 527 hereon	
	P	Lot 528 hereon	
	R	Lot 529 hereon	
	S	Lot 530 hereon	
	T	Lot 531 hereon	
	U	Lot 2 hereon	
Right to convey electricity	V	Lot 305 hereon	WEL Networks Limited

<b>Schedule of Existing Easements</b>			
<b>Purpose</b>	<b>Shown</b>	<b>Burdened Land</b>	<b>Document Number</b>
Right of way	B	Lot 2 hereon	EI 11070524.17



**S&L Project Reference: 30378-05 – Area LUK – Stage 17**

Schedule of Existing Easements in Gross				
Purpose	Shown	Burdened Land	Grantee	Document Number
Right to convey electricity and telecommunications	F	Lot 2 hereon	Transpower New Zealand Limited	EI 10700635.1
Right of way	B	Lot 2 hereon	Transpower New Zealand Limited	EI 11070524.16
Right to convey electricity and telecommunications	B & C	Lot 2 hereon	Transpower New Zealand Limited	EI 11070524.14
Right to convey electricity for earthing purposes	B	Lot 2 hereon	Transpower New Zealand Limited	EI 11070524.15
Right to convey telecommunications and computer media	B	Lot 2 hereon	Transpower New Zealand Limited	EI 11070524.10
Right to convey, discharge and earth electricity	M	Lot 2 hereon	Transpower New Zealand Limited	EI 11070524.13
Right to convey electricity, telecommunications and computer media	W & X	Lot 2 hereon	WEL Networks Limited	EI 11070524.20

Certifying parties must sign or initial this box



**Land Specialists**  
*Your Property, Our Environment*

**S&L Project Reference: 30378-05 – Area LUK – Stage 17**

**Land Registration District**

**South Auckland**

**Plan Number**

**DP 570352**

**Territorial Authority (the Council)**

**Hamilton City Council**

**Amalgamation Conditions**

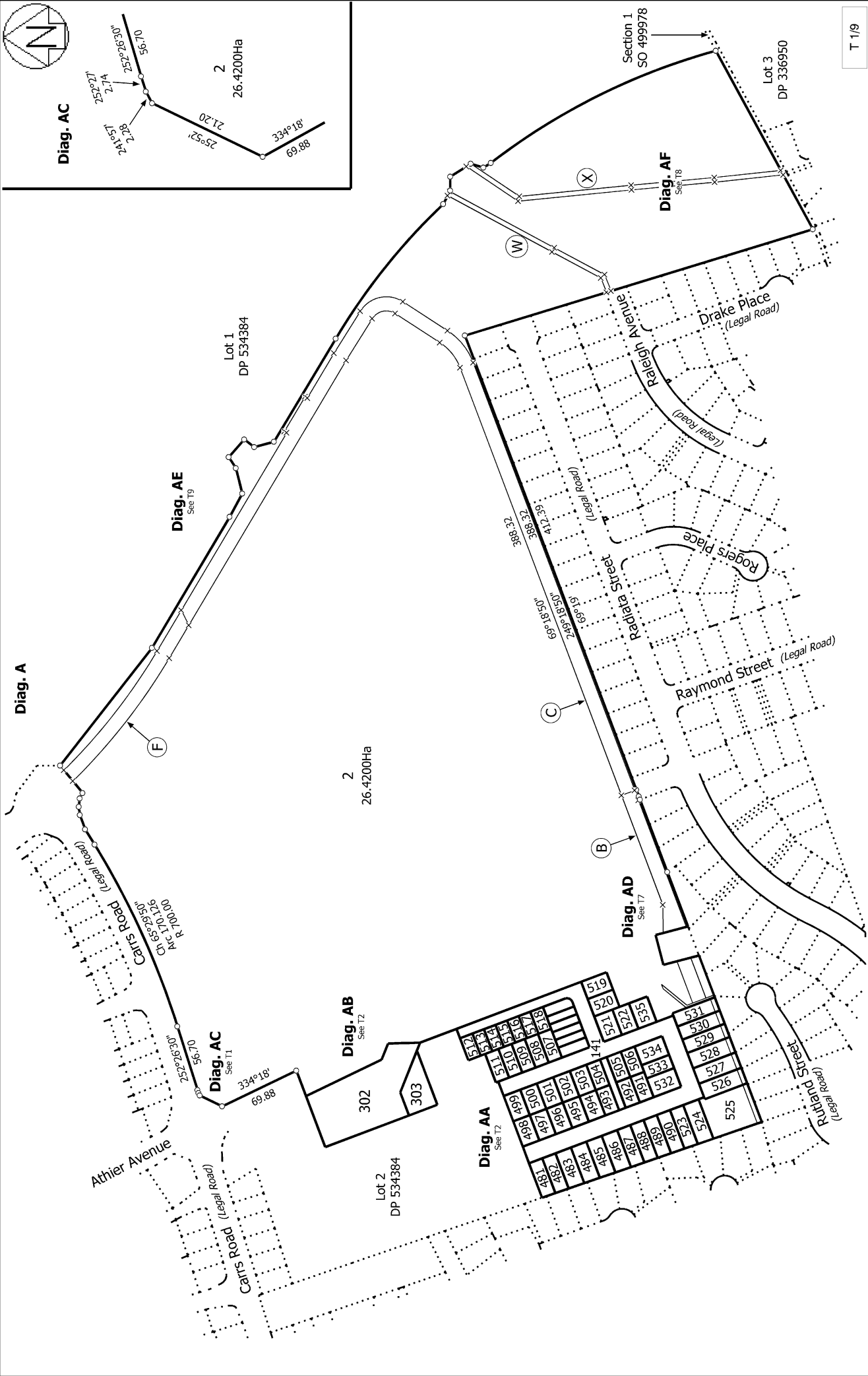
(Pursuant to s220 Resource Management Act 1991)

That Lots 8025 & 8026 hereon be held in the same record of title.

That Lots 8027 & 8028 hereon be held in the same record of title.

That Lots 8029 & 8030 hereon be held in the same record of title.

LINZ Reference: 1682792



T 1/9

Land District: South Auckland  
**Digitally Generated Plan**  
 Generated on: 02/12/2021 4:43pm Page 7 of 15

Surveyor: Scott Rodney Carley  
 Firm: Shrimpton and Lipinski Limited Partn

**Title Plan**  
**LT 570352**  
**DRAFT**

Lot 2, 141, 302, 303, 305, 481-535 and 8025-8030 Being a Subdivision of Lot 2  
**DP 570351**







Diag. AAA

Lot 2  
DP 534384



T 3/9

Land District: South Auckland

Digitally Generated Plan

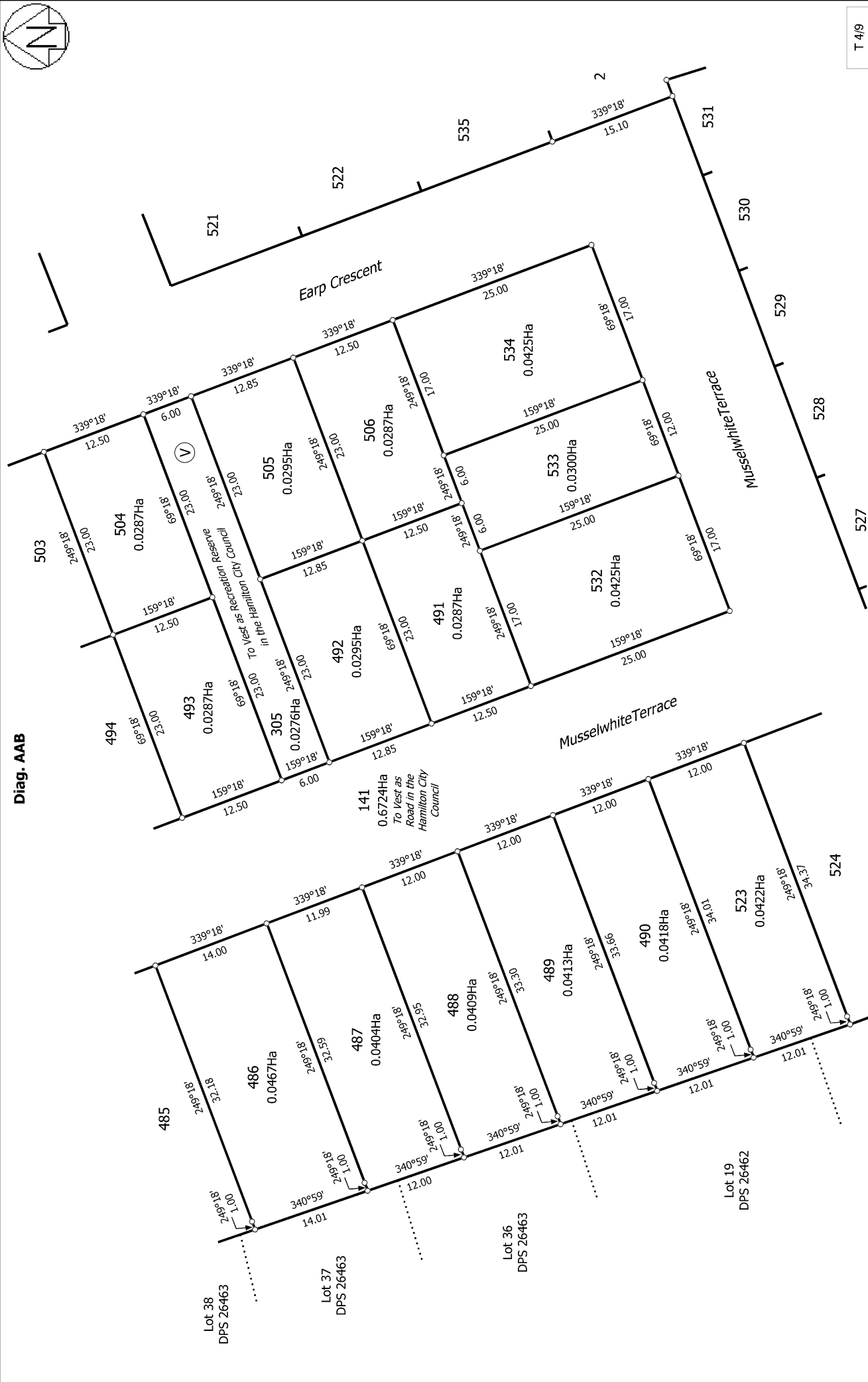
Generated on: 02/12/2021 4:43pm Page 9 of 15

Lots 2, 141, 302, 303, 305, 481-535 and 8025-8030 Being a Subdivision of Lot 2

DP 570351

Surveyor: Scott Rodney Carley  
Firm: Shrimpton and Lipinski Limited Partnr

Title Plan  
LT 570352  
DRAFT



T 4/9

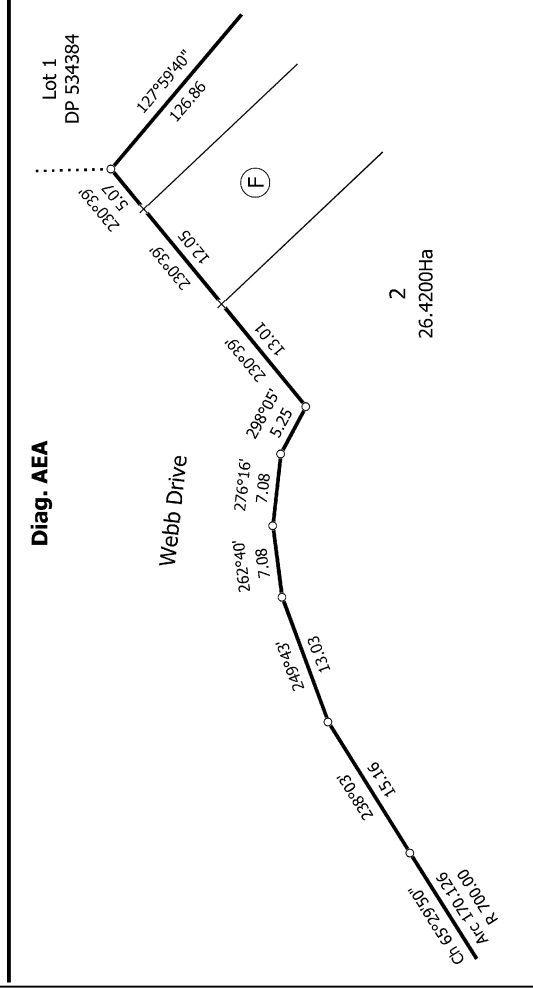
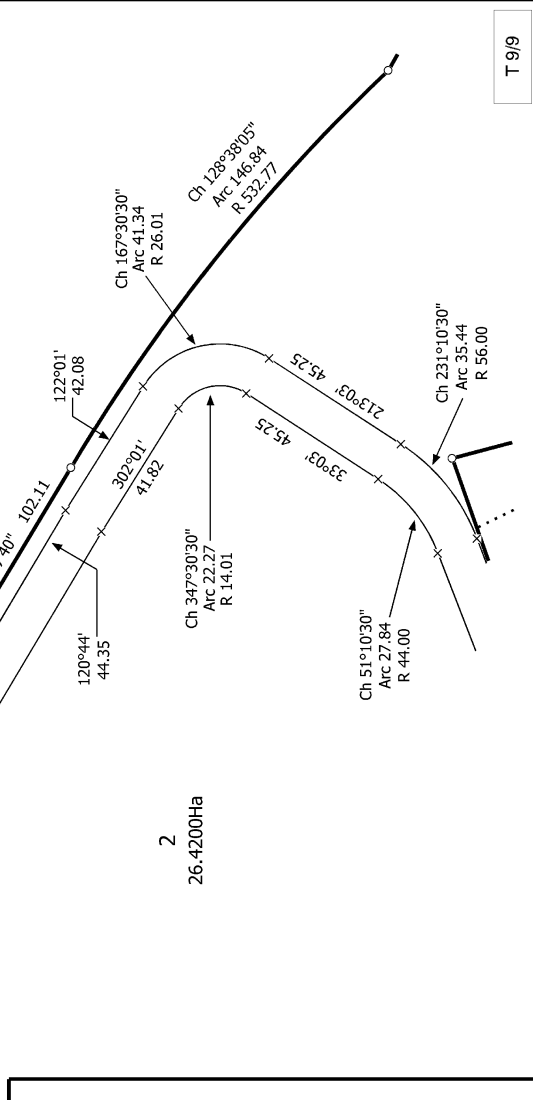
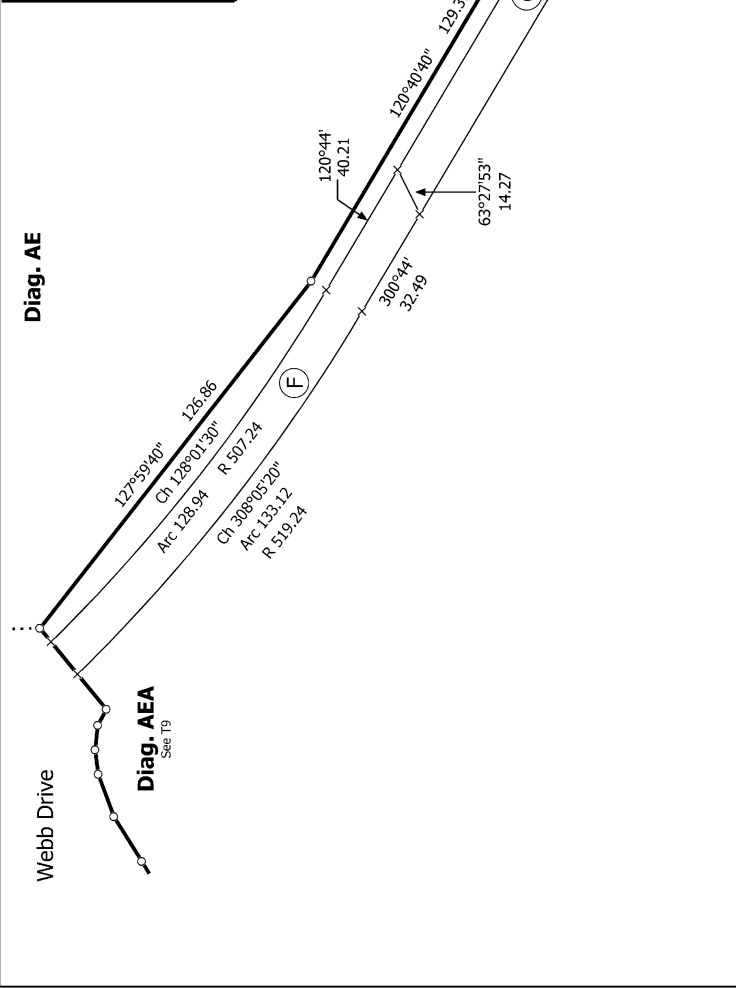
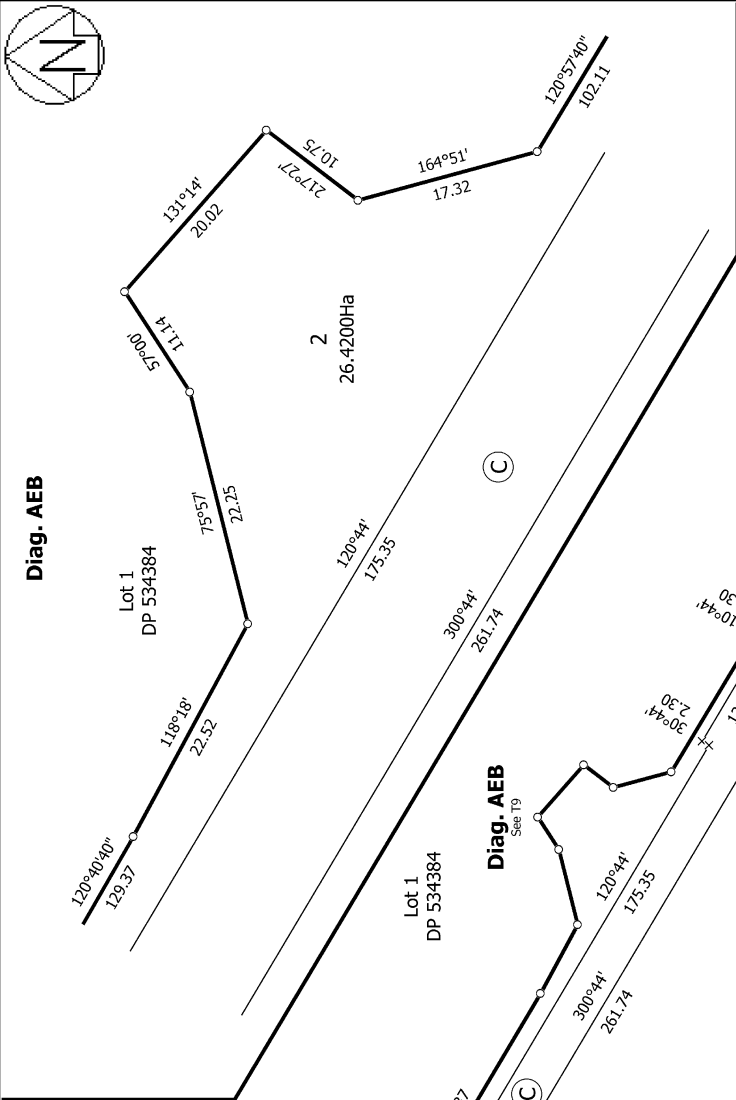
<p>Land District: South Auckland</p> <p><b>Digitally Generated Plan</b></p> <p>Generated on: 02/12/2021 4:43pm Page 10 of 15</p>	<p><b>Lots 2, 141, 302, 303, 305, 481-535 and 8025-8030 Being a Subdivision of Lot 2</b></p> <p>DP 570351</p>	<p>Surveyor: Scott Rodney Carley</p> <p>Firm: Shrimpton and Lipinski Limited Partn</p>	<p><b>Title Plan</b></p> <p>LT 570352</p> <p>DRAFT</p>
--	---	--	--











T 9/9

**Title Plan**  
LT 570352  
DRAFT

Surveyor: Scott Rodney Carley  
Firm: Shrimpton and Lipinski Limited Partn

**Lots 2, 141, 302, 303, 305, 481-535 and 8025-8030 Being a Subdivision of Lot 2**  
DP 570351

Land District: South Auckland  
**Digitally Generated Plan**  
Generated on: 02/12/2021 4:43pm Page 15 of 15