



Title Plan - DP 570351

Survey Number DP 570351
Surveyor Reference 30378-05 - Area LUK - Stage 16
Surveyor Scott Rodney Carley
Survey Firm Shrimpton and Lipinski Limited Partnership
Surveyor Declaration I Scott Rodney Carley, being a licensed cadastral surveyor, certify that--
(a) this dataset provided by me and its related survey are accurate, correct and in accordance with the Cadastral Survey Act 2002 and Cadastral Survey Rules 2021; and
(b) the survey was undertaken by me or under my personal direction.
Declared on 02 May 2022 03:49 PM

Survey Details

Dataset Description Lots 2, 100, 301, 450-480, 811, 8001-8024, 8117 and 8119 Being a Subdivision of Lot 2 DP 534384
Status Deposited
Land District South Auckland
Submitted Date 02/05/2022
Survey Class Class A
Survey Approval Date 11/05/2022
Deposit Date 02/05/2022

Territorial Authorities

Hamilton City

Comprised In

RT 880927

Created Parcels

Parcels	Parcel Intent	Area	RT Reference
Lot 2 Deposited Plan 570351	Fee Simple Title	29.8600 Ha	1030213
	Road	1.0460 Ha	
Lot 301 Deposited Plan 570351	Vesting on Deposit for Local Purpose Reserve	0.2761 Ha	1030214
Lot 450 Deposited Plan 570351	Fee Simple Title	0.0411 Ha	1030215
Lot 451 Deposited Plan 570351	Fee Simple Title	0.0366 Ha	1030216
Lot 452 Deposited Plan 570351	Fee Simple Title	0.0378 Ha	1030217
Lot 453 Deposited Plan 570351	Fee Simple Title	0.0391 Ha	1030218
Lot 454 Deposited Plan 570351	Fee Simple Title	0.0322 Ha	1030219
Lot 455 Deposited Plan 570351	Fee Simple Title	0.0330 Ha	1030220
Lot 456 Deposited Plan 570351	Fee Simple Title	0.0558 Ha	1030221
Lot 457 Deposited Plan 570351	Fee Simple Title	0.0345 Ha	1030222
Lot 458 Deposited Plan 570351	Fee Simple Title	0.0345 Ha	1030223
Lot 459 Deposited Plan 570351	Fee Simple Title	0.0345 Ha	1030224
Lot 460 Deposited Plan 570351	Fee Simple Title	0.0345 Ha	1030225
Lot 461 Deposited Plan 570351	Fee Simple Title	0.0345 Ha	1030226
Lot 462 Deposited Plan 570351	Fee Simple Title	0.0345 Ha	1030227
Lot 463 Deposited Plan 570351	Fee Simple Title	0.0425 Ha	1030228
Lot 464 Deposited Plan 570351	Fee Simple Title	0.0300 Ha	1030229
Lot 465 Deposited Plan 570351	Fee Simple Title	0.0425 Ha	1030230

Title Plan - DP 570351

Created Parcels

Parcels	Parcel Intent	Area	RT Reference
Lot 466 Deposited Plan 570351	Fee Simple Title	0.0345 Ha	1030231
Lot 467 Deposited Plan 570351	Fee Simple Title	0.0345 Ha	1030232
Lot 468 Deposited Plan 570351	Fee Simple Title	0.0345 Ha	1030233
Lot 469 Deposited Plan 570351	Fee Simple Title	0.0345 Ha	1030234
Lot 470 Deposited Plan 570351	Fee Simple Title	0.0345 Ha	1030235
Lot 471 Deposited Plan 570351	Fee Simple Title	0.0345 Ha	1030236
Lot 472 Deposited Plan 570351	Fee Simple Title	0.0492 Ha	1030237
Lot 473 Deposited Plan 570351	Fee Simple Title	0.0441 Ha	1030238
Lot 474 Deposited Plan 570351	Fee Simple Title	0.0448 Ha	1030239
Lot 475 Deposited Plan 570351	Fee Simple Title	0.0362 Ha	1030240
Lot 476 Deposited Plan 570351	Fee Simple Title	0.0428 Ha	1030241
Lot 477 Deposited Plan 570351	Fee Simple Title	0.0434 Ha	1030242
Lot 478 Deposited Plan 570351	Fee Simple Title	0.0400 Ha	1030243
Lot 479 Deposited Plan 570351	Fee Simple Title	0.0400 Ha	1030244
Lot 480 Deposited Plan 570351	Fee Simple Title	0.0396 Ha	1030245
Lot 811 Deposited Plan 570351	Fee Simple Title	0.0091 Ha	Multiple
Lot 8001 Deposited Plan 570351	Fee Simple Title	0.0211 Ha	1030246
Lot 8002 Deposited Plan 570351	Fee Simple Title	0.0182 Ha	1030246
Lot 8003 Deposited Plan 570351	Fee Simple Title	0.0183 Ha	1030247
Lot 8004 Deposited Plan 570351	Fee Simple Title	0.0185 Ha	1030247
Lot 8005 Deposited Plan 570351	Fee Simple Title	0.0213 Ha	1030248
Lot 8006 Deposited Plan 570351	Fee Simple Title	0.0215 Ha	1030248
Lot 8007 Deposited Plan 570351	Fee Simple Title	0.0189 Ha	1030249
Lot 8008 Deposited Plan 570351	Fee Simple Title	0.0191 Ha	1030249
Lot 8009 Deposited Plan 570351	Fee Simple Title	0.0192 Ha	1030250
Lot 8010 Deposited Plan 570351	Fee Simple Title	0.0194 Ha	1030250
Lot 8011 Deposited Plan 570351	Fee Simple Title	0.0324 Ha	1030250
Lot 8012 Deposited Plan 570351	Fee Simple Title	0.0272 Ha	1030251
Lot 8013 Deposited Plan 570351	Fee Simple Title	0.0177 Ha	1030251
Lot 8014 Deposited Plan 570351	Fee Simple Title	0.0177 Ha	1030252
Lot 8015 Deposited Plan 570351	Fee Simple Title	0.0177 Ha	1030252
Lot 8016 Deposited Plan 570351	Fee Simple Title	0.0177 Ha	1030253
Lot 8017 Deposited Plan 570351	Fee Simple Title	0.0272 Ha	1030253
Lot 8018 Deposited Plan 570351	Fee Simple Title	0.0250 Ha	1030254
Lot 8019 Deposited Plan 570351	Fee Simple Title	0.0145 Ha	1030254
Lot 8020 Deposited Plan 570351	Fee Simple Title	0.0145 Ha	1030255
Lot 8021 Deposited Plan 570351	Fee Simple Title	0.0145 Ha	1030255
Lot 8022 Deposited Plan 570351	Fee Simple Title	0.0145 Ha	1030256
Lot 8023 Deposited Plan 570351	Fee Simple Title	0.0145 Ha	1030256
Lot 8024 Deposited Plan 570351	Fee Simple Title	0.0145 Ha	1030257
Lot 8117 Deposited Plan 570351	Fee Simple Title	0.0229 Ha	1030257
Lot 8119 Deposited Plan 570351	Fee Simple Title	0.0368 Ha	Multiple
Area A Deposited Plan 570351	Easement		
Area B Deposited Plan 570351	Easement		



Title Plan - DP 570351

Created Parcels

Parcels	Parcel Intent	Area	RT Reference
Area C Deposited Plan 570351	Easement		
Area F Deposited Plan 570351	Easement		
Area I Deposited Plan 570351	Easement		
Area J Deposited Plan 570351	Easement		
Area K Deposited Plan 570351	Easement		
Area M Deposited Plan 570351	Easement		
Area W Deposited Plan 570351	Easement		
Area X Deposited Plan 570351	Easement		
Total Area		<hr/> 32.9007 Ha	



S&L Project Reference: 30378-05 – Area LUK – Stage 16

Land Registration District

South Auckland

Plan Number

DP 570351

Territorial Authority (the Council)

Hamilton City Council

Memorandum of Easements			
Purpose	Shown	Burdened Land	Benefited Land
Right of way Right to convey electricity, telecommunications and gas Right to drain water and sewage	A	Lot 8119 hereon	Lots 8012 – 8017 hereon
	I & J	Lot 811 hereon	Lot 455 hereon & Lot 456 hereon

Schedule of Easements in Gross			
Purpose	Shown	Burdened Land	Grantee
Right to drain water	J	Lot 811 hereon	Hamilton City Council
	K	Lot 456 hereon	
Right to convey water	A	Lot 8119 hereon	Hamilton City Council
Right to convey telecommunications	A	Lot 8119 hereon	Tuatahi First Fibre Limited
Right to convey telecommunications	I	Lot 811 hereon	Tuatahi First Fibre Limited
Right to convey electricity & telecommunications	I & J	Lot 811 hereon	WEL Networks Limited

Schedule of Existing Easements			
Purpose	Shown	Burdened Land	Document Number
Right of way	B	Lot 2 hereon	EI 11070524.17



S&L Project Reference: 30378-05 – Area LUK – Stage 16

Schedule of Existing Easements in Gross				
Purpose	Shown	Burdened Land	Grantee	Document Number
Right to convey electricity and telecommunications	F	Lot 2 hereon	Transpower New Zealand Limited	EI 10700635.1
Right of way	B	Lot 2 hereon	Transpower New Zealand Limited	EI 11070524.16
Right to convey electricity and telecommunications	B & C	Lot 2 hereon	Transpower New Zealand Limited	EI 11070524.14
Right to convey electricity for earthing purposes	B	Lot 2 hereon	Transpower New Zealand Limited	EI 11070524.15
Right to convey telecommunications and computer media	B	Lot 2 hereon	Transpower New Zealand Limited	EI 11070524.10
Right to convey, discharge and earth electricity	M	Lot 2 hereon	Transpower New Zealand Limited	EI 11070524.13
Right to convey electricity, telecommunications and computer media	W & X	Lot 2 hereon	WEL Networks Limited	EI 11070524.20

Certifying parties must sign or initial this box



S&L Project Reference: 30378-05 – Area LUK – Stage 16

Land Registration District

South Auckland

Plan Number

DP 570351

Territorial Authority (the Council)

Hamilton City Council

Amalgamation Conditions

(Pursuant to s220 Resource Management Act 1991)

That Lot 8119 hereon (legal access) be held as to six undivided one-sixth shares by the owners of Lots 8012, 8013, 8014, 8015, 8016 and 8017 hereon and individual records of title be issued in accordance therewith.

That Lot 811 hereon (legal access) be held as to two undivided one half shares by the owners of Lots 455 & 456 hereon and individual records of title be issued in accordance therewith.

That Lots 8001 & 8002 hereon be held in the same record of title.

That Lots 8003 & 8004 hereon be held in the same record of title.

That Lots 8005 & 8006 hereon be held in the same record of title.

That Lots 8007 & 8008 hereon be held in the same record of title.

That Lots 8009, 8010 & 8011 hereon be held in the same record of title.

That Lots 8012 & 8013 hereon be held in the same record of title.

That Lots 8014 & 8015 hereon be held in the same record of title.

That Lots 8016 & 8017 hereon be held in the same record of title.

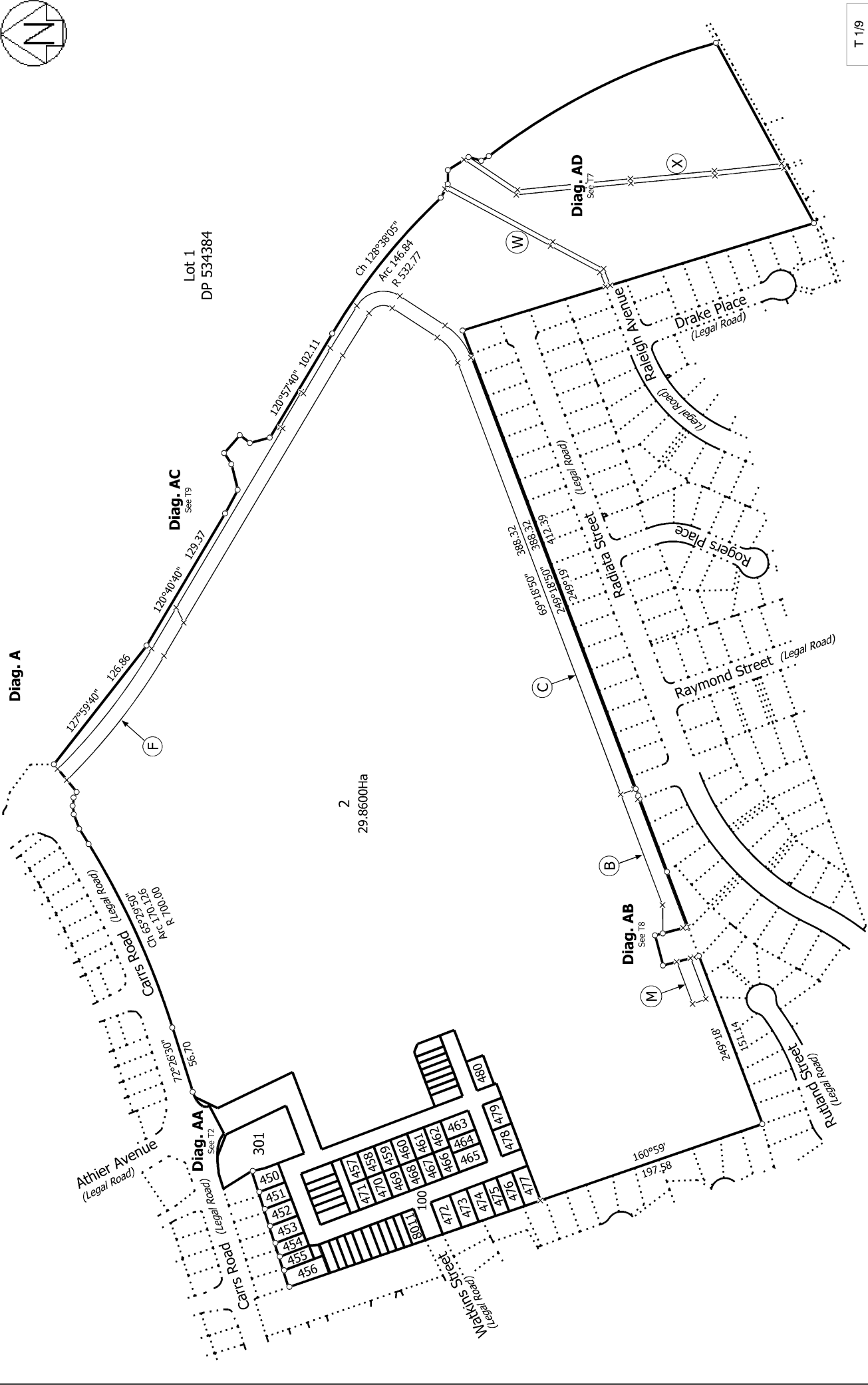
That Lots 8018 & 8019 hereon be held in the same record of title.

That Lots 8020 & 8021 hereon be held in the same record of title.

That Lots 8022 & 8023 hereon be held in the same record of title.

That Lots 8024 & 8117 hereon be held in the same record of title.

LINZ Reference: 1682792 & 1958892



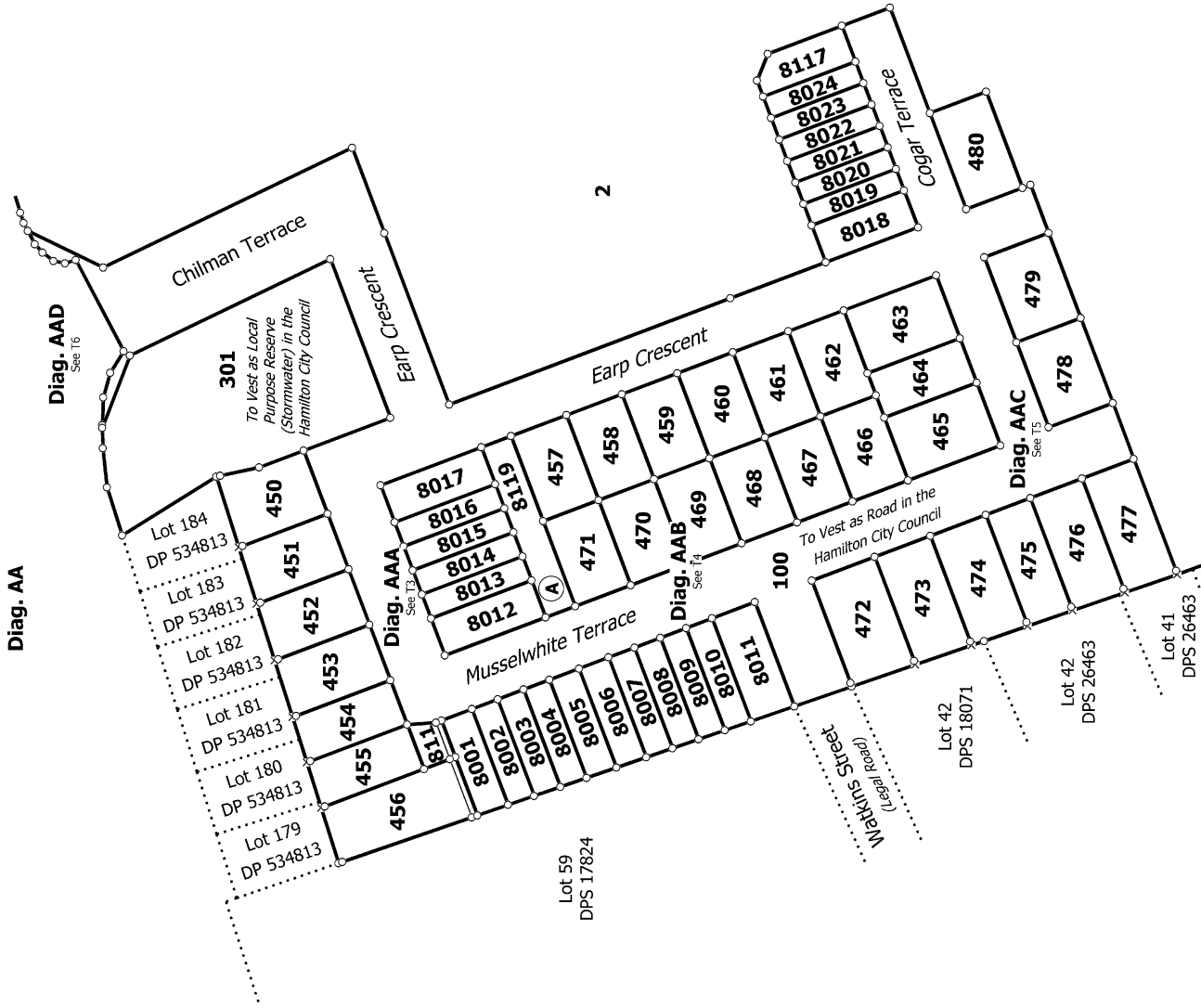
T 1/9

Land District: South Auckland
 Digitally Generated Plan
 Generated on: 25/05/2022 11:58am Page 7 of 15

Surveyor: Scott Rodney Carley
 Firm: Shrimpton and Lipinski Limited Partn

Title Plan
 DP 570351

Lots 2, 100, 301, 450-480, 811, 8001-8024, 8117 and 8119 Being a Subdivision of Lot 2 DP 534384
 Deposited on: 2/05/2022



T 2/9

Lots 2, 100, 301, 450-480, 811, 8001-8024, 8117 and 8119 Being a Subdivision of Lot 2 DP 534384

Surveyor: Scott Rodney Carley
 Firm: Shrimpton and Lipinski Limited Partn

Title Plan
 DP 570351

Deposited on: 2/05/2022



Diag. AAA



T 3/9

Lots 2, 100, 301, 450-480, 811, 8001-8024, 8117 and 8119 Being a Subdivision of Lot 2 DP 534384

Surveyor: Scott Rodney Carley
 Firm: Shrimpton and Lipinski Limited Partn

Title Plan
 DP 570351

Deposited on: 2/05/2022



Title Plan
DP 570351

Deposited on: 2/05/2022

Surveyor: Scott Rodney Carley
Firm: Shrimpton and Lipinski Limited Partn

Lots 2, 100, 301, 450-480, 811, 8001-8024, 8117 and 8119 Being a Subdivision of Lot 2 DP 534384

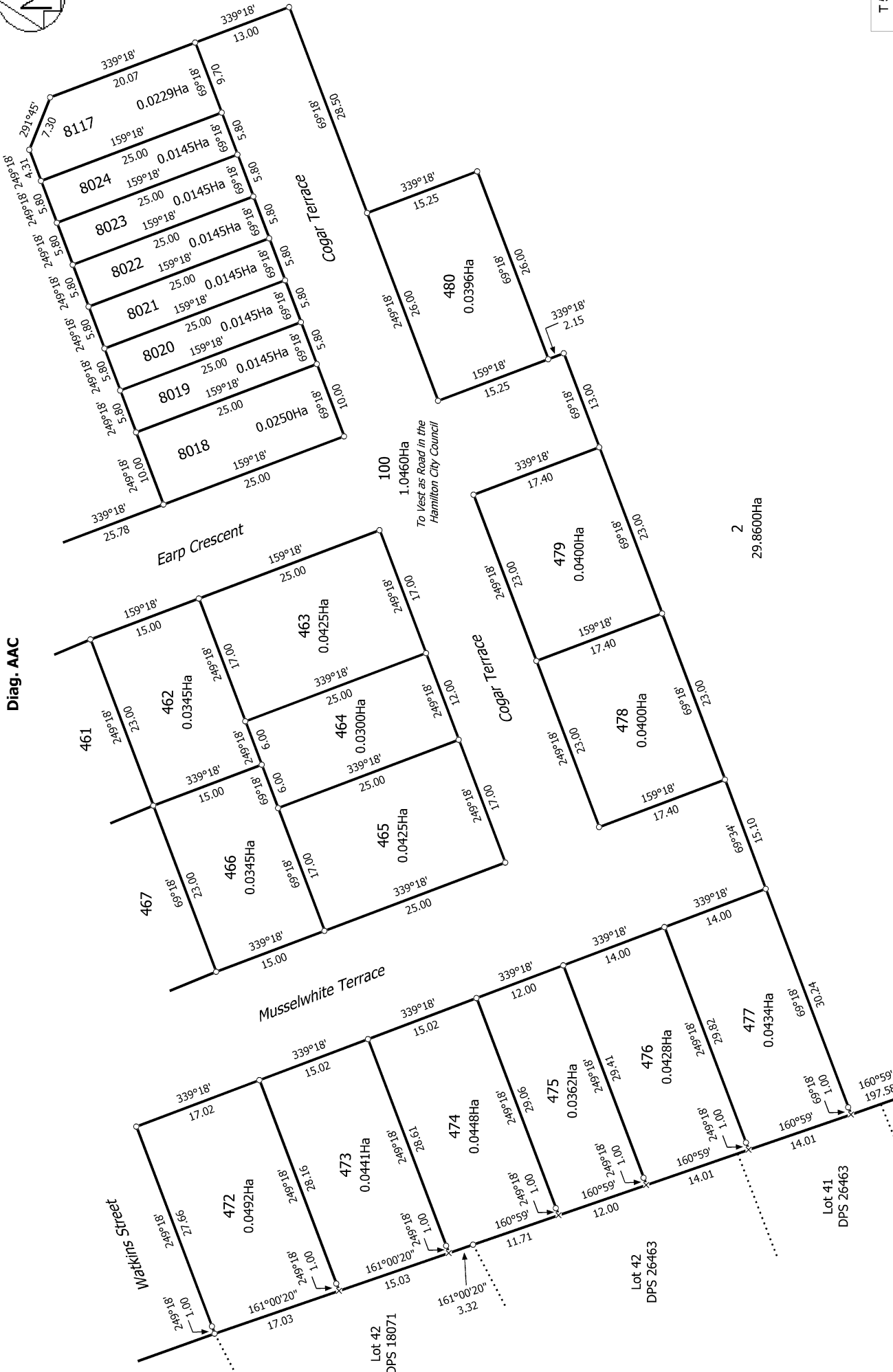
Land District: South Auckland

Digitally Generated Plan

Generated on: 25/05/2022 11:58am Page 10 of 15



Diag. AAC



T 5/9

Lots 2, 100, 301, 450-480, 811, 8001-8024, 8117 and 8119 Being a Subdivision of Lot 2 DP 534384

Surveyor: Scott Rodney Carley
 Firm: Shrimpton and Lipinski Limited Partn

Title Plan
 DP 570351

Deposited on: 2/05/2022

